



30 Pine Street • New Rochelle • New York • 10801  
 914 / 576 - 0200  
 914 / 576 - 0605 fax  
 1 - 800 - 431 - 2745 US & Canada  
 www.bakerspride.com web address

# APC-18

Electric Conveyor Oven

## PARTS LIST



<b>Model Number</b>	<b>Serial Number</b>	<b>Voltage</b>		
<b>APC-18</b>	_____	120/208V <input type="checkbox"/>	120/240V <input type="checkbox"/>	230/400V <input type="checkbox"/>
		<b>Phase</b>		<b>Cycles</b>
		1 <input type="checkbox"/>	3 <input type="checkbox"/>	50hz <input type="checkbox"/> 60hz <input type="checkbox"/>

# APC-18

Electric Conveyor Oven

30 Pine Street • New Rochelle • New York • 10801

914 / 576 - 0200

914 / 576 - 0605 fax

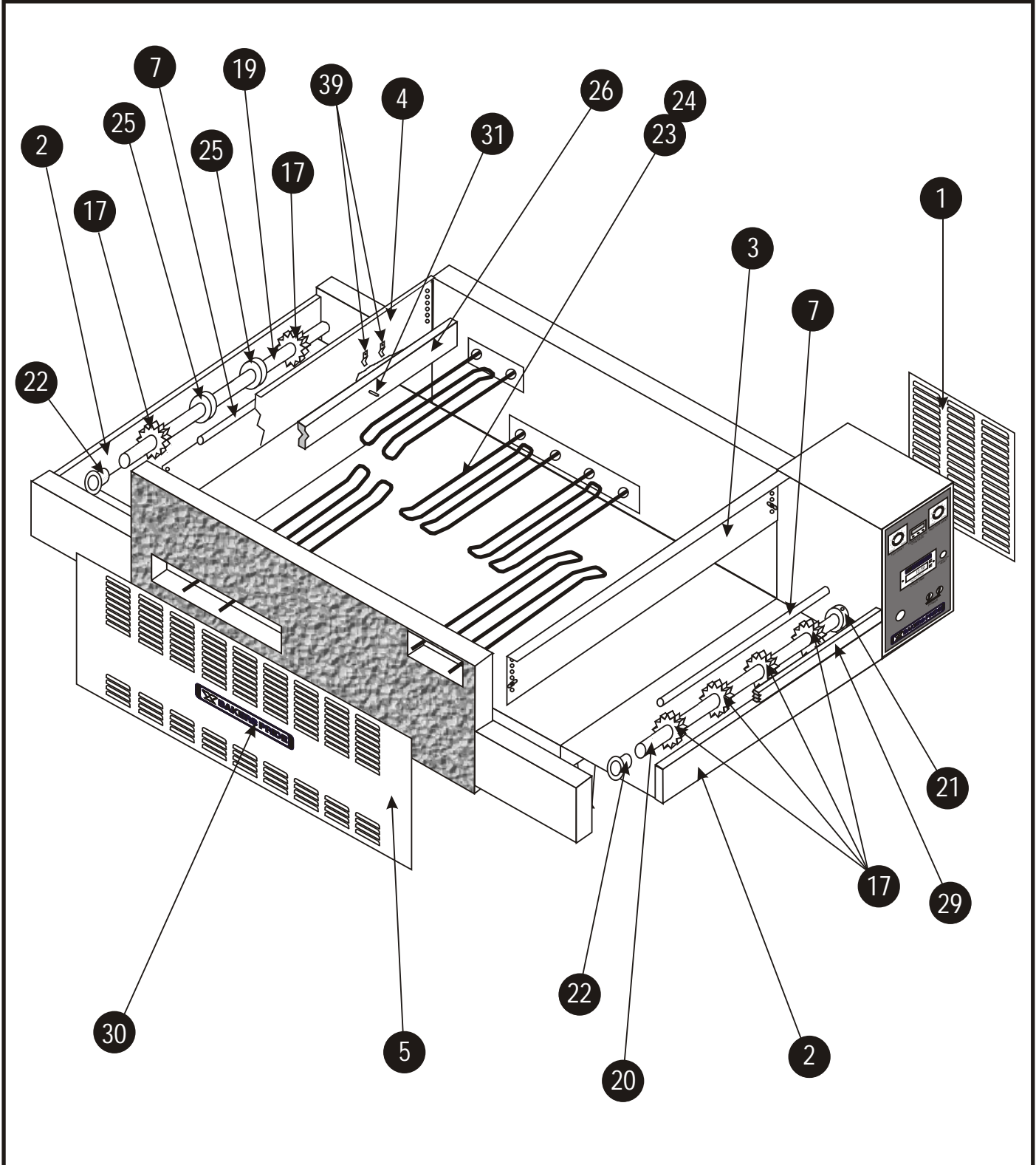
1 - 800 - 431 - 2745 US & Canada

www.bakerspride.com web address



Figure A

FRONT VIEW





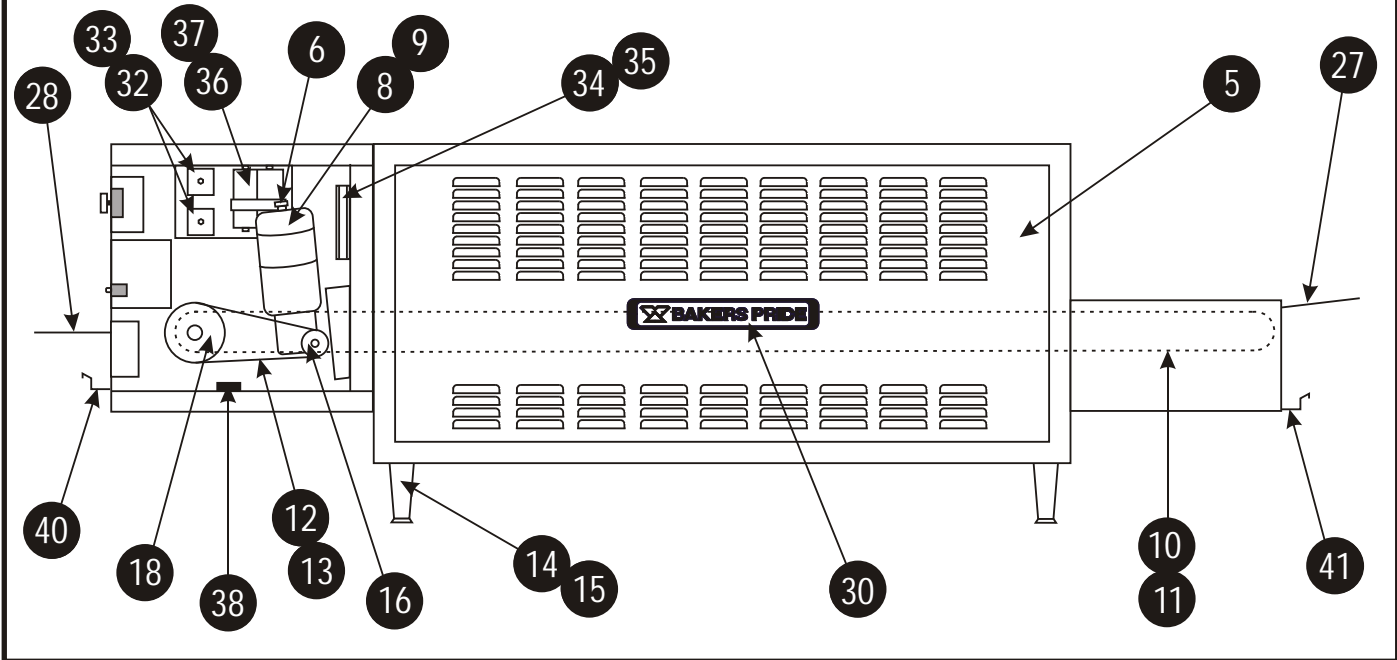
30 Pine Street • New Rochelle • New York • 10801  
 914 / 576 - 0200  
 914 / 576 - 0605 fax  
 1 - 800 - 431 - 2745 US & Canada  
 www.bakerspride.com web address

# APC-18

Electric Conveyor Oven

**Figure B**

**REAR VIEW**



Item	Part #	Description	Item	Part #	Description
1	B5032K	Control Box Cover	22	S3194X	Bushing, Duronze w/Flats (4)
2	B5036X	Cover, Front & Rear (2)	23	L1121X	Element, 208V/2KW (5)
3	B5037K	Heat Shield, Receiving End	24	L1123X	Element, 230V/2KW (5)
4	B5038K	Heat Shield, Loading End	25	S3181X	Idler Disk (2)
5	B5039K	Outer Side Panel (2)	26	B3050K	Element Support (Sensor Mount)
6	M1136X	Motor Pick Up, Hall Effect	27	B5001T	Loading Tray (Optional)
7	B5053X	Tie Rod, 3/8" x 21 1/2" (2)	28	B5002T	Receiving Tray (Optional)
8	M1131X	Motor, 90VDC	29	B5079T	Product Stop
9	M1252X	Brush, Motor	30	U1043X	Name Plate, Bakers Pride
10	S3178X	Conveyor Belt, 18"	31	M1164X	Thermocouple, "J" Type (Temp. Sensor)
11	S3124A	Connecting Link, Conveyor Belt	32	M1181X	Phase Control, 230V/20A
12	S3148X	Chain, #25, 1/4" Pitch (Drive)	33	M1191X	Phase Control, 380-440V
13	S3149A	Master Link, #25	34	M1208X	Fan, Large Axial, 208V
14	S1014Y	Leg, 4" Adjustable (each)	35	M1193X	Fan, Large Axial, 115V
15	S1014X	Leg, 4" Adjustable (set/4)	36	M1228X	Mercury Relay, 2 Pole, 208/240, 30A
16	S3179X	Sprocket, 1/2" Bore (On Motor)	37	M1205X	Mercury Relay, 3 Pole, 208V O/S
17	S3180X	Sprocket, 3/4" Bore (6)	38	P1068X	5 Pole Terminal Block
18	S3146X	Sprocket, 3/4" Bore (Drive Shaft)	39	P1105A	Wire Clip, 1/8" Victor
19	B3069T	Shaft, Idler 3/4"	40	B5055U	Crumb Tray Assy., Rear
20	B3070T	Shaft, Drive 3/4"	41	B5056U	Crumb Tray Assy., Front
21	S3152X	Shaft Collar			

# APC-18

Electric Conveyor Oven

30 Pine Street • New Rochelle • New York • 10801

914 / 576 - 0200

914 / 576 - 0605 fax

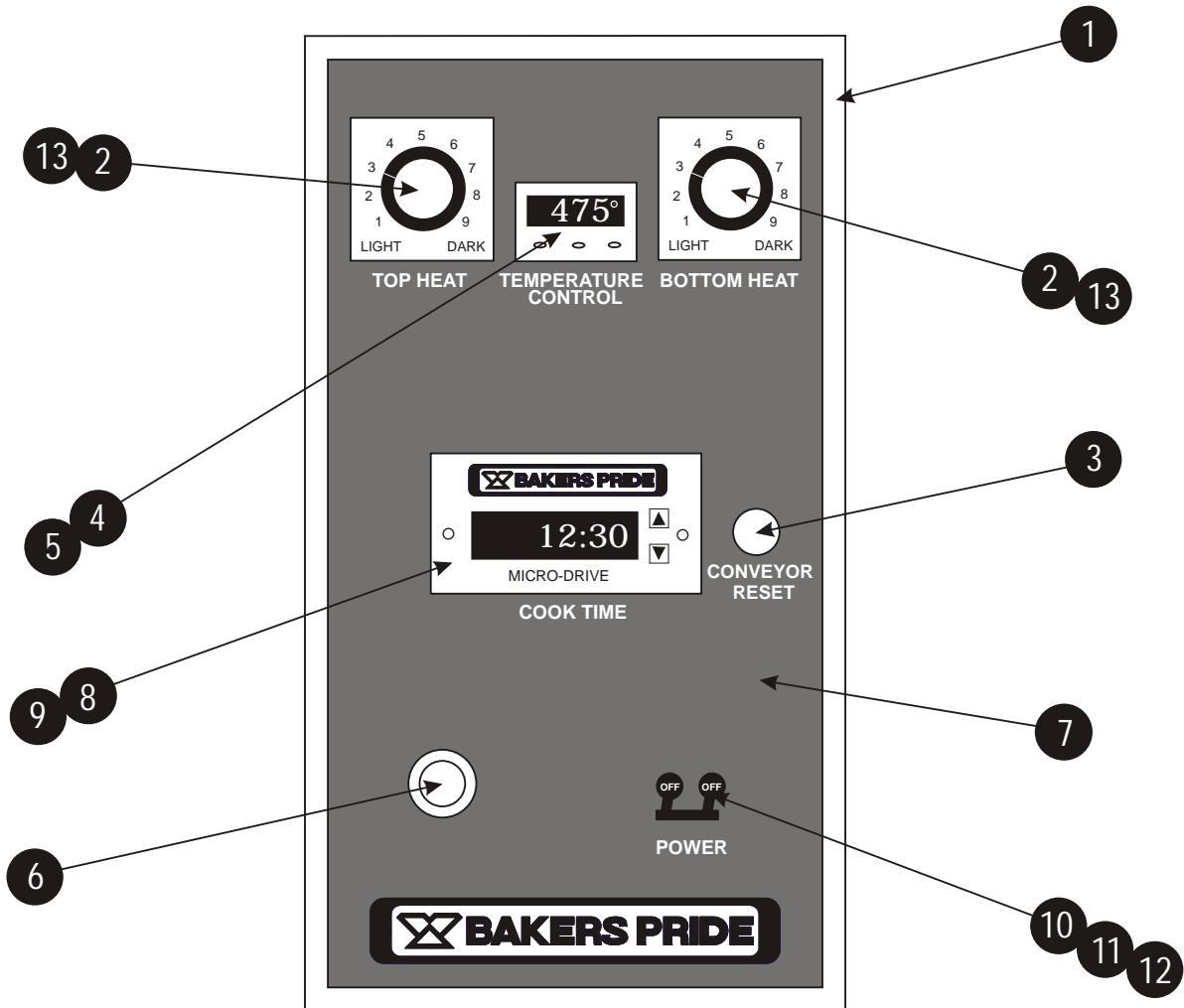
1 - 800 - 431 - 2745 US & Canada

www.bakerspride.com web address



Figure C

## CONTROL PANEL



Item	Part #	Description	Item	Part #	Description
1	B5040X	Control Panel	8	M1143X	Speed/Time Control, 115V
2	M1180X	Potentiometer, Clarostat	9	M1230X	Speed/Time Control, 240V
3	M1133X	Circuit Breaker (Conveyor Reset)	10	M1229X	Circuit Breaker, 4 Pole, 30A
4	M1239X	Temperature Controller, CAL3200, "F"	11	M1219X	Circuit Breaker, 3 Pole, 380/415-20A
5	M1240X	Temperature Controller, CAL3200, "C"	12	M1198X	Circuit Breaker, 2 Pole, 40A
6	P1127X	Pilot Light, Amber	13	S1205X	Knob, Control
7	U1174X	Overlay, Conveyor			