


**DESMON**  
 Stabilimento 83051 Nusco (AV) Zona Ind.le  
 Sede Legale Montebello (AV) Via. F.lli Benedetti  
 Tel. 0827/607318/19/44  
 Fax. 0827/607009  
 VIETATA LA RIPRODUZIONE O COMUNICAZIONE A TERZI  
 DI QUESTO DISEGNO SENZA AUTORIZZAZIONE SCRITTA

DENOMINAZIONE  
**GMI4-ETL**

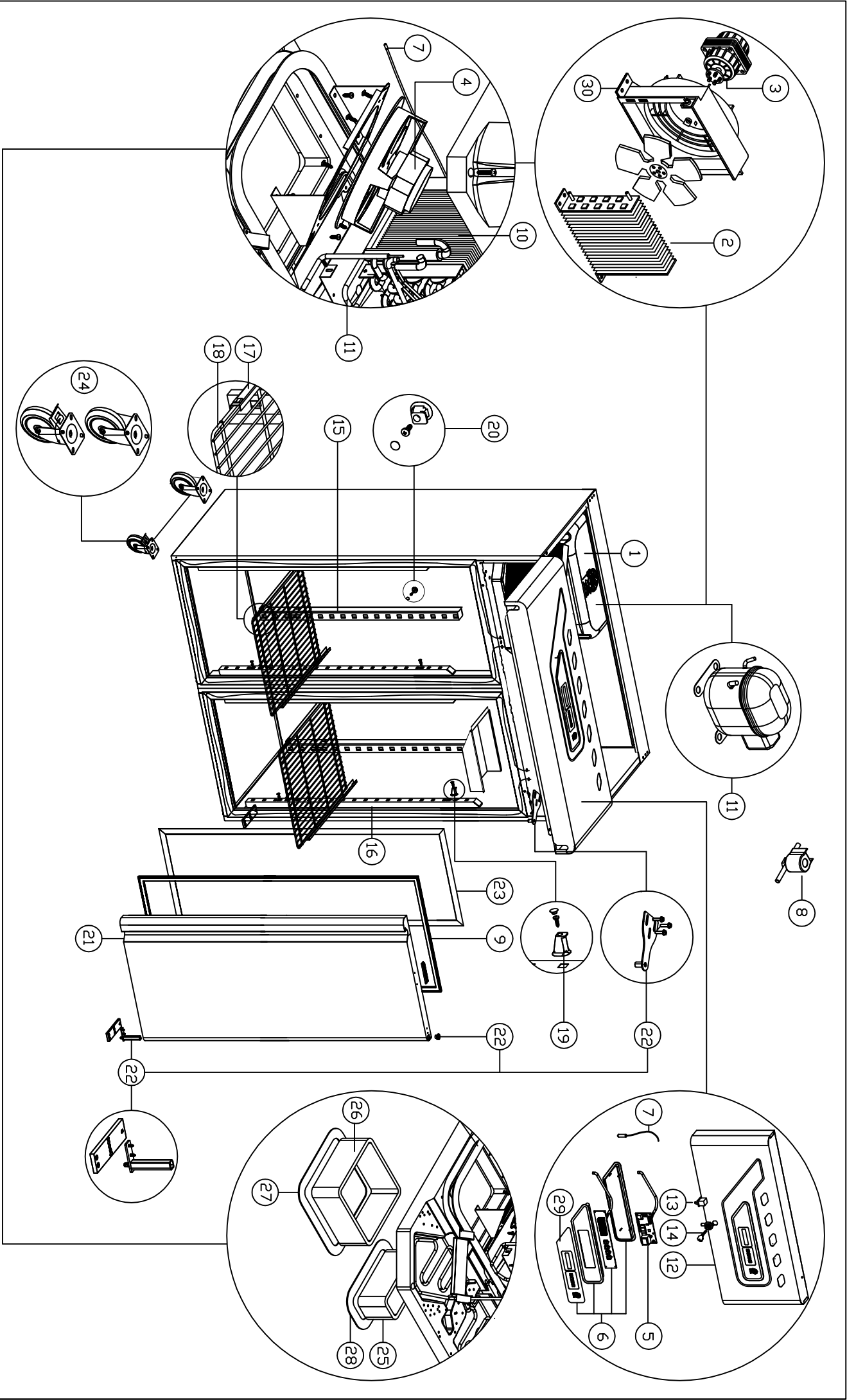
FOGLIO  
 1/1

DISSEGNAZIONE CAD  
**DESMON \***  
 DATA DI REALIZZAZIONE  
 18-12-2012

REV. N°  
 00

DISSEGNAZIONE REV.  
 DATA REV.

DESCRIZIONE MODIFICA



<b>ITEM N°</b>	<b>PART NUMBER</b>	<b>DESCRIPTION</b>
1	900270063	MONOBLOCK FOR GM14
2	Q32-0376UL	CONDENSER COIL STFT 18227
3	R05-0260	CONDENSER FAN MOTOR
4	R05-0210	EVAPORATOR FAN MOTOR
5	R35-0400UL	REMOTE RELAIS BOARD
6	80190040	KEYBOARD KIT FOR REACH IN
7	Q32-0578	NTC PROBE
8	R30-0040	SOLENOID VALVE
9	H25-0051	GASKET 660X1585
10	Q32-0692Y	EVAPORATOR COIL
11	Q32-0850	COMPRESSOR CAE4450Z-A 115V 60HZ
12	4160205S	FRONT PANEL
13	R25-0086	DOOR SWITCH
14	P25-0004	DOOR LOCK
15	4080153	VERTICAL REAR BAR SUPPORT FOR SHELF RAILS
16	4080163	VERTICAL FRONT BAR SUPPORT FOR SHELF RAILS
17	4180014	SHELF RAIL
18	Q32-0002	SHELF - PLASTIC COATED
19	H49-0062	FRONT BAR FIXING SUPPORT
20	H49-0063	REAR BAR FIXING SUPPORT
21	600000463	DOOR ASSY
22	89000030	DOOR HINGE KIT
23	H62-295060	DOOR FRAME PLASTIC STRIP
24	P80-0026	WHEELS
25	80010530	POLYURETHANE OUTLET AIR BAFFLE
25	H25-0040	MONOBLOCK BASIS-TOP SEAL OUTLET
26	80010520	POLYURETHANE INLET AIR BAFFLE
27	H25-0038	MONOBLOCK BASIS-TOP SEAL INLET
29	B99-0213	GOLD REACH-IN KEYBOARD SERIGRAPHY
30	Q32-0111	CONDENSER AIR BAFFLE