

Modular Platform

Viale Treviso, 15
33170 Pordenone - Italy
Fax: +39 0434-380577

FRYTOP ELETTRICO N900
ELECTRIC FRYTOP N900

PNC	Model	Ref.	Page	Notes
220 187	WR/E1	a	1 - 2 - 3	Electric Frytop Mild Steel Smooth Flat 400mm
220 188	WR/E2	b	1 - 2 - 3	Electric Frytop Mild Steel Smooth Flat 800mm
220 189	WR/E1R	c	1 - 2 - 3	Electric Frytop Mild Steel Ribbed Sloped 400mm
220 190	WR/E2R	d	1 - 2 - 3	Electric Frytop Mild Steel 1/3 Ribbed Sloped 800mm
220 191	WR/E1C	e	1 - 2 - 3	Electric Frytop Chromed Smooth Sloped 400mm
220 192	WR/E2C	f	1 - 2 - 3	Electric Frytop Chromed Smooth Sloped 800mm
220 193	WR/E2CR	g	1 - 2 - 3	Electric Frytop Chromed 1/3 Ribbed Sloped 800mm
220 194	WR/E1E5	h	1 - 2 - 3	Electric Frytop Mild Steel Smooth Flat 400mm 230V
220 195	WR/E1RE5	l	1 - 2 - 3	Electric Frytop Mild Steel Ribbed Sloped 400mm 230V
220 196	WR/E2E5	m	1 - 2 - 3	Electric Frytop Mild Steel Smooth Flat 800mm 230V
220 197	WR/E2RE5	n	1 - 2 - 3	Electric Frytop Mild Steel 1/3 Ribbed Sloped 800mm 230V
220 198	WR/E1CE5	o	1 - 2 - 3	Electric Frytop Chromed Smooth Sloped 400mm 230V
220 199	WR/E2CE5	p	1 - 2 - 3	Electric Frytop Chromed Smooth Sloped 800mm 230V
220 200	WR/E2CRE5	q	1 - 2 - 3	Electric Frytop Chromed 1/3 Ribbed Sloped 800mm 230V

Pag. 1
Pag. 2 - 3

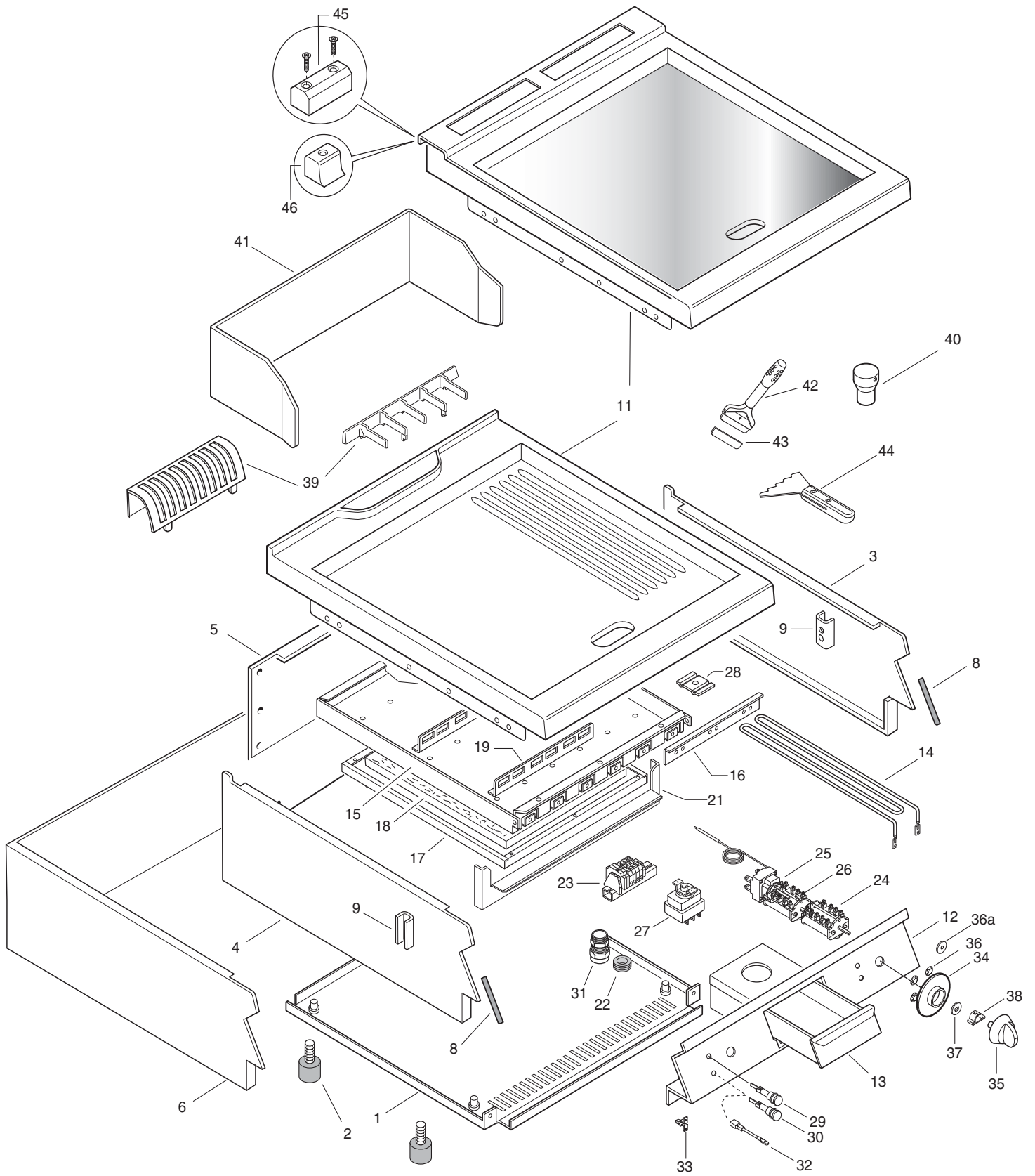
Index

Frame and components
Spare parts list

Indice

Struttura e componenti
Lista ricambi

Brand / Marchio : Alpeninox
Factory code: 9PDX



FRYTOP ELETTRICO N900
ELECTRIC FRYTOP N900

FRYTOP ELETTRICO N900
ELECTRIC FRYTOP N900

PNC	Model	Ref.	Notes
220 187	WR/E1	a	Electric Frytop Mild Steel Smooth Flat 400mm
220 188	WR/E2	b	Electric Frytop Mild Steel Smooth Flat 800mm
220 189	WR/E1R	c	Electric Frytop Mild Steel Ribbed Sloped 400mm
220 190	WR/E2R	d	Electric Frytop Mild Steel 1/3 Ribbed Sloped 800mm
220 191	WR/E1C	e	Electric Frytop Chromed Smooth Sloped 400mm
220 192	WR/E2C	f	Electric Frytop Chromed Smooth Sloped 800mm
220 193	WR/E2CR	g	Electric Frytop Chromed 1/3 Ribbed Sloped 800mm
220 194	WR/E1E5	h	Electric Frytop Mild Steel Smooth Flat 400mm 230V
220 195	WR/E1RE5	l	Electric Frytop Mild Steel Ribbed Sloped 400mm 230V
220 196	WR/E2E5	m	Electric Frytop Mild Steel Smooth Flat 800mm 230V
220 197	WR/E2RE5	n	Electric Frytop Mild Steel 1/3 Ribbed Sloped 800mm 230V
220 198	WR/E1CE5	o	Electric Frytop Chromed Smooth Sloped 400mm 230V
220 199	WR/E2CE5	p	Electric Frytop Chromed Smooth Sloped 800mm 230V
220 200	WR/E2CRE5	q	Electric Frytop Chromed 1/3 Ribbed Sloped 800mm 230V

Pos	Factory Code	6DGT Code	Descrizione	Description	Ref./ Notes
			Pagina 1	Page 1	
1	0530813301	*	FONDO 400	BOTTOM PANEL 400	acehlo
	0530813402	*	FONDO 800	BOTTOM PANEL 800	bdfgmnpp
2	0315252601	026806	PIEDINO CON VITE	SCREW FOOT FOR TOP	
3	0870852900	0C2380	FIANCO DX TOP	RIGHT SIDE PANEL TOP	till s/n 903
4	0870853000	0C2381	FIANCO SX TOP	LEFT SIDE PANEL TOP	till s/n 903
5	0529828601	0C0013	SCHIENALE TOP 400	REAR PANEL 400	acehlo
	0529828701	0C0031	SCHIENALE TOP 800	REAR PANEL 800	till s/n 903
	0530899500	*	RIVESTIMENTO LATERALE 400	EXTERNAL PANEL 400	since s/n 904
		*	RIVESTIMENTO LATERALE 800	EXTERNAL PANEL 800	since s/n 904
8	0140088006	0L0113	GUARNIZIONE PER CRUSCOTTO	GASKET FOR CONTROL PANEL	
9	0527850500	0C0156	PIASTRA FISSAGGIO FIANCHI	SIDE PANEL JOINTING PLATE	
11	0873842204	0C2486	RIPIANO PIASTRA FERRO LISCIO 400	SHELF, SMOOTH PLATE 400	ah
	0870896000	0C5971	RIPIANO PIASTRA FERRO LISCIO 400	SHELF, SMOOTH PLATE 400	till s/n 903
	0873842303	*	RIPIANO PIASTRA FERRO LISCIO 800	SHELF, SMOOTH PLATE 800	ah
	0870897100	0C5982	RIPIANO PIASTRA FERRO LISCIO 800	SHELF, SMOOTH PLATE 800	since s/n 904
	0873842503	0C2488	RIPIANO PIASTRA FE. RIGATA 400	SHELF, RIBBED PLATE 400	bm
	0870896300	0C5974	RIPIANO PIASTRA FE. RIGATA 400	SHELF, RIBBED PLATE 400	till s/n 903
	0873842603	0C3684	RIPIANO PIASTRA FE.1/3 RIGATA 800	SHELF, 1/3 RIBBED PLATE 800	bm
	0870897700	0C5988	RIPIANO PIASTRA FE.1/3 RIGATA 800	SHELF, 1/3 RIBBED PLATE 800	since s/n 904
	0873842803	0C2490	RIPIANO PIASTRA CROMATA 400	SHELF, CHROME SM. PLATE 400	cl
	0870896600	0C5977	RIPIANO PIASTRA CROMATA 400	SHELF, CHROME SM. PLATE 400	till s/n 903
	0873842903	*	RIPIANO PIASTRA CROMATA 800	SHELF, CHROME SM. PLATE 800	cl
	0870898300	0C5994	RIPIANO PIASTRA CROMATA 800	SHELF, CHROME SM. PLATE 800	since s/n 904
	0873843103	0C1243	RIPIANO PIASTRA CR.1/3 RIGATA 800	SHELF, CHROME 1/3 RIB. PLATE 800	dn
	0870898900	0C6000	RIPIANO PIASTRA CR.1/3 RIGATA 800	SHELF, CHROME 1/3 RIB. PLATE 800	till s/n 903
					since s/n 904
12	0853874901	*	CRUSCOTTO 400	CONTROL PANEL 400	acehlo
	0853875001	*	CRUSCOTTO 800	CONTROL PANEL 800	bdfgmnpp
13	0851804704	0C0583	CASSETTO FRYTOP 400	DRAWER, FRYTOP 400	acehlo
	0851804804	0C0584	CASSETTO FRYTOP 800	DRAWER, FRYTOP 800	bdfgmnpp
14	0617823500	006681	RESISTENZA 2500W 400V	HEATING ELEMENT 2500W 400V	abcdefg
	0617823600	006682	RESISTENZA 2500W 230V	HEATING ELEMENT 2500W 230V	hlmnopq
15	0529804902	*	SCATOLA RESISTENZE 400	BOX FOR HEATING ELEM.400	acehlo
	0529804202	*	SCATOLA RESISTENZE 800	BOX FOR HEATING ELEM.800	bdfgmnpp
16	0527830800	*	SQUADRETTA FERMO RESISTENZA	BRACKET, HEATING ELEM.	
17	0529805100	*	SCATOLA ISOLAM. RESIST. 400	BOX, HEAT. ELEM. INSULATING 400	acehlo
	0529804300	*	SCATOLA ISOLAM. RESIST. 800	BOX, HEAT. ELEM. INSULATING 800	bdfgmnpp

FRYTOP ELETTRICO N900
ELECTRIC FRYTOP N900

PNC	Model	Ref.	Notes
220 187	WR/E1	a	Electric Frytop Mild Steel Smooth Flat 400mm
220 188	WR/E2	b	Electric Frytop Mild Steel Smooth Flat 800mm
220 189	WR/E1R	c	Electric Frytop Mild Steel Ribbed Sloped 400mm
220 190	WR/E2R	d	Electric Frytop Mild Steel 1/3 Ribbed Sloped 800mm
220 191	WR/E1C	e	Electric Frytop Chromed Smooth Sloped 400mm
220 192	WR/E2C	f	Electric Frytop Chromed Smooth Sloped 800mm
220 193	WR/E2CR	g	Electric Frytop Chromed 1/3 Ribbed Sloped 800mm
220 194	WR/E1E5	h	Electric Frytop Mild Steel Smooth Flat 400mm 230V
220 195	WR/E1RE5	i	Electric Frytop Mild Steel Ribbed Sloped 400mm 230V
220 196	WR/E2E5	m	Electric Frytop Mild Steel Smooth Flat 800mm 230V
220 197	WR/E2RE5	n	Electric Frytop Mild Steel 1/3 Ribbed Sloped 800mm 230V
220 198	WR/E1CE5	o	Electric Frytop Chromed Smooth Sloped 400mm 230V
220 199	WR/E2CE5	p	Electric Frytop Chromed Smooth Sloped 800mm 230V
220 200	WR/E2CRE5	q	Electric Frytop Chromed 1/3 Ribbed Sloped 800mm 230V

Pos	Factory Code	6DGT Code	Descrizione	Description	Ref./ Notes
			Pagina 1	Page 1	
18	0560817502	*	PANNELLO ISOLANTE 400	INSULATING PANEL 400	aceho
	0560817602	*	PANNELLO ISOLANTE 800	INSULATING PANEL 800	bdfgmnpp
19	0508894701	*	SUPPORTO RESISTENZE 400	SUPPORT HEATING ELEMENT 400	aceho
	0508894503	*	SUPPORTO RESISTENZE 800	SUPPORT HEATING ELEMENT 800	bdfgmnpp
21	0529804701	*	PARETE INTERMEDIA 400	INTERMEDIATE WALL 400	aceho
	0529804101	*	PARETE INTERMEDIA 800	INTERMEDIATE WALL 800	bdfgmnpp
22	0246520500	050180	PASSACAVO DIA.23	GROMMET DIA.23	
23	0639805001	059239	MORSETTIERA DI ALIMENTAZIONE	MAIN TERMINAL BLOCK	
24	0641803400	006649	COMMUTATORE	SWITCH	
25	0646805302	059235	TERMOSTATO	THERMOSTAT	
26	0214123600	050256	PERNO	PIN	
27	0646808102	004269	TERMOSTATO DI SICUREZZA	SAFETY THERMOSTAT	
28	0206250401	*	PIASTR.FISS.CAPILL.	PLATE, CAPILLARY FIXING	
29	0876800002	005010	LAMPADA VERDE	GREEN LAMP	
30	0876800102	005011	LAMPADA GIALLA	YELLOW LAMP	
31	0544802300	0C0068	PRESSACAVO	TOGHTENER CORD	
32	0638865100	005370	RESISTENZA DI CADUTA 270K ohm	RESISTANCE, COMPETANCE	abcdefg
33	0518801801	053342	MOLLA PER MARCHIO	SPRING FOR BRAND	
34	0548861201	0C0466	GHIERA	KNOB RING FOR SWITCH	
35	0548865500	0A5621	MANOPOLA	KNOB	
36	0218912211	069567	MOLLETTA PER GHIERA	SPRING FOR KNOB RING	
36a	0541813800	0C6171	RONDELLA	WASHER	
37	0543821000	053816	GUARNIZIONE PER MANOPOLA	GASKET KNOB	
38	0214590701	025245	MOLLETTA X MANOPOLA	SPRING FOR KNOB	
39	0510820004	0C0978	GRIGLIA CAMINO	GRATE FOR CHIMNEY	till s/n 903
	0538841900	0C5624	GRIGLIA CAMINO	GRATE FOR CHIMNEY	since s/n 904
40	0516852801	006554	TAPPO X PIASTRA ORIZZONTALE	CAP FOR SMOOTH FLAT PLATE	ab
41	0529805502	006555	PARASPRUZZI 400	SPLASH GUARD 400	aceho
	0529805602	006556	PARASPRUZZI 800	SPLASH GUARD 800	bdfgmnpp
42	0805848201	055995	RASCHIETTO	SCRAPER	
43	0506887400	056347	LAMA PER RASCHIETTO	BLADE FOR SCRAPER	
44	0830851300	056940	SPATOLA PER PIASTRA RIGATA	PADDLE FOR RIBBED PLATE	
45	0516860700	0C0137	PIASTRINA PER GIUNZIONE	JOINTING REAR PLATE	
46	0541810600	0C0187	TAPPO POSTERIORE RIPIANO	STOPPER	