



# Replacement Parts

## List EmberGlo® Steamer Models ES5CTS, ES5CTS18 & ES5PCS

*Tap Water Operation  
Designed to Operate  
Without Distilled Water  
Self Contained Water Supply*

★MADE in the USA★

Automatic Timer/Push Button Operation  
Steamer with Water Pan

Date Codes:

Cubic Style Timer Models ES5CTS & ES5CTS18

- first construction January 2014

Cubic Style Timer Model ES5PCS

- first construction January 2015

Replacement Model numbers for Old Style Timer Models, that are no longer manufactured and replaced with the Cubic Style Timer:

ES5TS is replaced with ES5CTS

ES5TS18 is replaced with ES5CTS18

ES5PT is replaced with ES5PCS

Items listed are replacement parts for the current Model ES5CTS, ES5CTS18 & ES5PCS Tap Water Steamers and its components.

- EmberGlo Steamers do not require a separate hood for vapor produced during operation according to the Uniform Mechanical Codes per the International Conference of Building Officials Code.



Installation and Service Manual - 8449-96

<i>Models</i>	<i>Description</i>	<i>Volts</i>	<i>BOMs</i>
<b>1500W</b>			
ES5CTS	Timer Operation with Water Pan	120V	5400754
ES5CTS	Timer Operation with Water Pan	240V	5400756
ES5PCS	Fixed Timer Operation with Water Pan	120V	5400764
<b>1800W</b>			
ES5CTS18	Timer Operation with Water Pan	120V	5400755



**EmberGlo®**

EmberGlo  
A Div of Midco® International Inc.  
4140 West Victoria Street  
Chicago, Illinois 60646  
toll free 866.705.0514  
tel 773.604.8700  
fax 773.604.4070  
web www.emberglo.com  
e-mail sales@emberglo.com

**AVOID ERROR IN PARTS SELECTION.** When ordering use complete EmberGlo Part Number and Description. Furnish Model Number, Bill of Material Number and Serial Number (if available) from the specification plate found on the product.

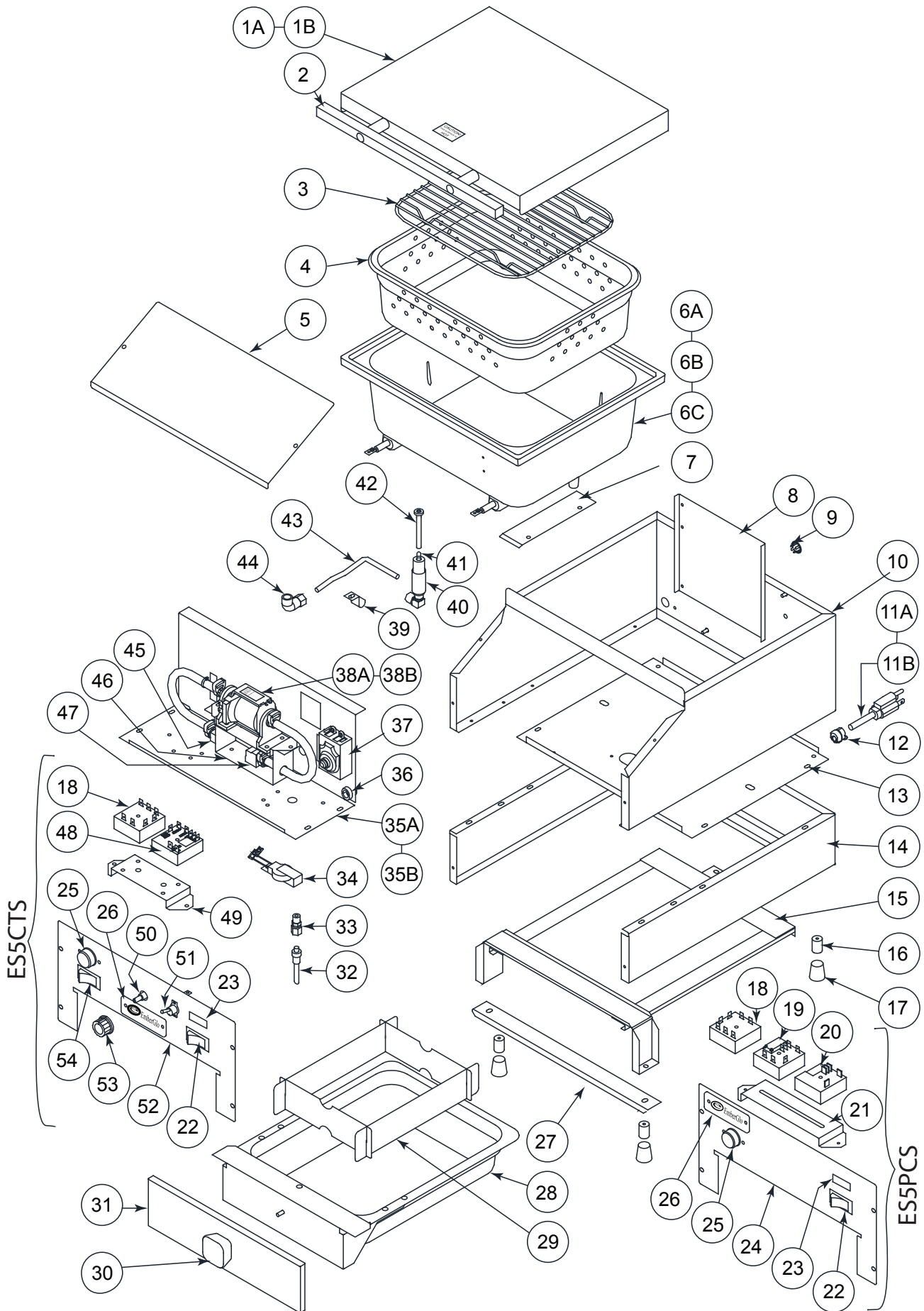
**IMPORTANT:** Availability of parts as well as specifications are subject to change without notice.

*As an ISO 9001:2008 certified company, we proudly design, manufacture and assemble our products in Chicago, Illinois, USA.*

*Quality Designed for Proven Performance*

416  
**8472 51**  
Printed in USA

# ES5CTS, ES5CTS18 & ES5PCS Exploded View



# ES5CTS, ES5CTS18 & ES5PCS Parts List

Part #	Description	Qty	Part #	Description	Qty		
1A	<a href="#">1420-80R</a>	Lid Assembly	1	38A	<a href="#">1435-12</a>	Pump Replacement Kit	1
1B	<a href="#">1420-81R</a>	Lid Assembly - 1800 Series Only	1	38B	<a href="#">1423-05</a>	Pump Assembly 220/1/50	1
2	<a href="#">1435-00</a>	Lid Handle Replacement Kit	1	39	<a href="#">1409-60</a>	Tube Clip	1
3	<a href="#">5608-50</a>	Food Pan Grid	1	40	<a href="#">1402-70</a>	Water Inlet Assembly	1
3B	<a href="#">5608-51</a>	Food Pan Grid 1.5" Tall	1	41	<a href="#">1412-60</a>	Nozzle Spring	1
4	<a href="#">1401-90</a>	ES5 3-Hole Food Pan	1	42	<a href="#">1411-20</a>	Water Nozzle with Spring	1
5	<a href="#">1401-21</a>	Control Box Cover	1	43A	<a href="#">1415-80</a>	TS Water Tube Assembly - ES5CTS / CTS18	1
6A	<a href="#">1401-61</a>	ES5 Generator - 220V, 1500W	1	43B	<a href="#">1415-70</a>	TS Water Tube - ES5PCS	1
6B	<a href="#">1401-63</a>	ES5 Generator - 120V, 1800W	1	44	<a href="#">8483-37</a>	1/8F X 1/4T Comp EL	1
6C	<a href="#">1401-64</a>	ES5 Generator - 120V, 1500W	1	45	<a href="#">8483-15</a>	1/8" Brass Street EL	1
7	<a href="#">1401-30</a>	ES5 Bulb Clamp	1	46	<a href="#">1417-00</a>	TS Pump Bracket	1
8	<a href="#">1409-00</a>	Stiffener	1	47	<a href="#">8483-36</a>	1/8" Brass EL	1
9	<a href="#">8451-89</a>	Plug Button HS51156-K1110	1	ES5CTS / ES5CTS18 - Front Panel			
10	<a href="#">1400-40</a>	Shell	1	18	<a href="#">8406-92</a>	Recycle Timer 606 - External Resistor *	1
11A	<a href="#">1403-70</a>	ES5 Power Cord-120V	1	22	<a href="#">8423-15</a>	On/Off Rocker Switch	1
11B	<a href="#">1415-10</a>	ES5 Power Cord-220V	1	23	<a href="#">8408-66</a>	Pilot-Light Ready-120V	1
12	<a href="#">8457-46</a>	Strain Relief	1	25	<a href="#">8423-22</a>	Push Button Switch	1
13	<a href="#">1401-10</a>	Rear Bottom	1	26	<a href="#">5622-00</a>	Name Plate	1
14	<a href="#">1407-10</a>	Water Pan Shell	1	48	<a href="#">8406-64</a>	One Shot Timer 844B - ES5CTS / CTS18	1
15	<a href="#">1406-50</a>	Water Pan Slide	1	49	<a href="#">1416-80</a>	Steamer Cube & Pump Bracket - ES5CTS / CTS18	1
16	<a href="#">5661-80</a>	Aluminum Leg	4	50	<a href="#">8408-92</a>	1 Meg Ohm Potentiometer - ES5CTS / CTS18	1
17	<a href="#">8450-25</a>	Socket Tip	4	51	<a href="#">8423-43</a>	On/Off Toggle Switch - ES5CTS / CTS18	1
ES5PCS & ES5PCS18 - Front Panel				52	<a href="#">1417-23</a>	Front Panel - ES5CTS / CTS18	1
18	<a href="#">8406-92</a>	Recycle Timer 606 - External Resistor *	1	53	<a href="#">8445-27</a>	Control Knob - ES5CTS / CTS18	1
19	<a href="#">8406-91</a>	One Shot Timer 844B - ES5PCS & ES5PCS18	1	54	<a href="#">8423-35</a>	Mode Rocker Switch - ES5CTS / CTS18	1
20	<a href="#">8406-67</a>	One Shot Timer Mod 8448 ES5PCS & ES5PCS18	1	Not Shown			
21	<a href="#">1416-90</a>	Timer Bracket for Cube Timers - ES5PCS & 18	1	<a href="#">1410-50</a>	Insulation Kit (Sides, Back, Front & Bottom)	1	
22	<a href="#">8423-15</a>	On/Off Rocker Switch	1	<a href="#">1420-00</a>	Spring Bar	2	
23	<a href="#">8408-66</a>	Pilot-Light Ready-120V	1	<a href="#">1420-40</a>	ES5 Hinge Spring	2	
24	<a href="#">1417-25</a>	Front Panel Sub Assembly - ES5PCS & 18	1	<a href="#">1421-45</a>	Back Hinge Kit (Less Spring Bar & Spring)	1	
25	<a href="#">8423-22</a>	Push Button Switch	1	<a href="#">8451-74</a>	Strainer	1	
26	<a href="#">5622-00</a>	Name Plate	1	Accessories - Not Shown			
27	<a href="#">1407-70</a>	Leg Channel	1	<a href="#">5608-70</a>	Three in 1 Basket Kit w/ Handle		
28	<a href="#">1402-10</a>	Water Pan	1	<a href="#">5682-60</a>	Tortilla Rack - Grid Style		
29	<a href="#">1411-00</a>	Water Pan Baffle Set	1	<a href="#">5608-72</a>	1/2 Size Basket w/ Handle		
30	<a href="#">8445-01</a>	Cover Knob	1	<a href="#">5608-73</a>	Two of 1/4 Size Basket w/ Handle		
31	<a href="#">1408-90</a>	Water Pan Front	1	<a href="#">8450-62</a>	Steam Generator Cleaning Brush		
32	<a href="#">1416-00</a>	TS Dip Tube Assembly	1	<a href="#">2070610</a>	Egg Poacher 4 Cup		
33	<a href="#">8483-14</a>	1/8" x 1/4" Straight Connector	1	<a href="#">2070615</a>	Egg Poacher 6 Cup		
34	<a href="#">1425-00</a>	Buzzer Assembly – 120V	1				
35A	<a href="#">1417-40</a>	TS Manual Front Bottom	1				
35B	<a href="#">1417-41</a>	TS Front Bottom -220V	1				
36	<a href="#">8484-76</a>	Shorty Bush B-500-375	1				
37	<a href="#">1412-41</a>	Thermal Fuse/ Thermostat Kit	1				

**\* NOTE: Old Timer Style Models - ES5TS, ES5TS18 & ES5PCS**

The EmberGlo **ES5TS, ES5TS18 & ES5PT** timer model steamers will not be manufactured after January 2014. The timers in these models are no longer available and were replaced with cubic style timer (CT Timers) models as follows:

**ES5TS - replace with ES5CTS                      ES5TS18 - replace with ES5CTS18                      ES5PT - replace with ES5PCS**

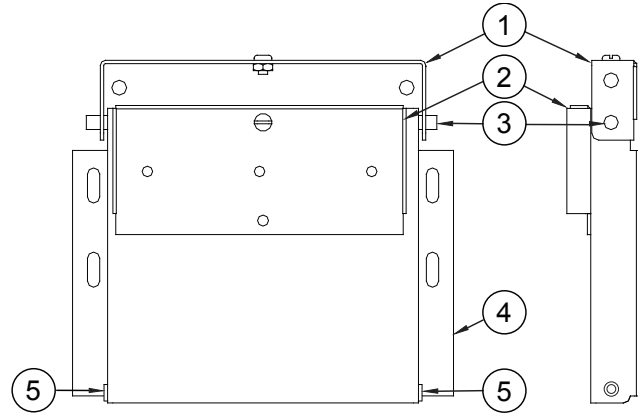
Aside from the timers all of the other parts remain the same. Call the manufacturer or your local representative for further details or assistance on these old style timer steamers.

# ES5CTS, ES5CTS18 & ES5PCS

## ADJUSTABLE HINGE FOR 2-POSITION LID OPENING (60° OR 90° OPEN)

First construction January 29, 1990 (date code 0590). Steamers built before this date featured a 90° opening lid. Replacement parts for the early construction are no longer available. When replacing order Part Number [1421-45](#) ADJUSTABLE HINGE RETROFIT KIT.

Part # or Item #	Description	Qty
1	Adjustable Upper Hinge	1
2	Lid Stop Rivetment	1
3	Upper Hinge Bar	1
4	Adjustable Lower Hinge	1
5	5/16" x 3/16" O-Ring	2
Not Shown - (Sold Separately)		
<a href="#">1420-00</a>	Spring bar	2
<a href="#">1420-40</a>	ES5 Hinge Spring	2



★ MADE in the USA ★

As an ISO 9001:2008 certified company, we proudly design, manufacture and assemble our products in Chicago, Illinois, USA.

EmberGlo - A Division of Midco International - 4140 West Victoria Street - Chicago, Illinois 60646

toll free: 866 705 0515 - tel: 773.604.8700 - fax: 773.604.4070 - web: [www.emberglo.com](http://www.emberglo.com) - e-mail: [sales@emberglo.com](mailto:sales@emberglo.com)



EmberGlo



416  
8472 51  
Printed in USA