



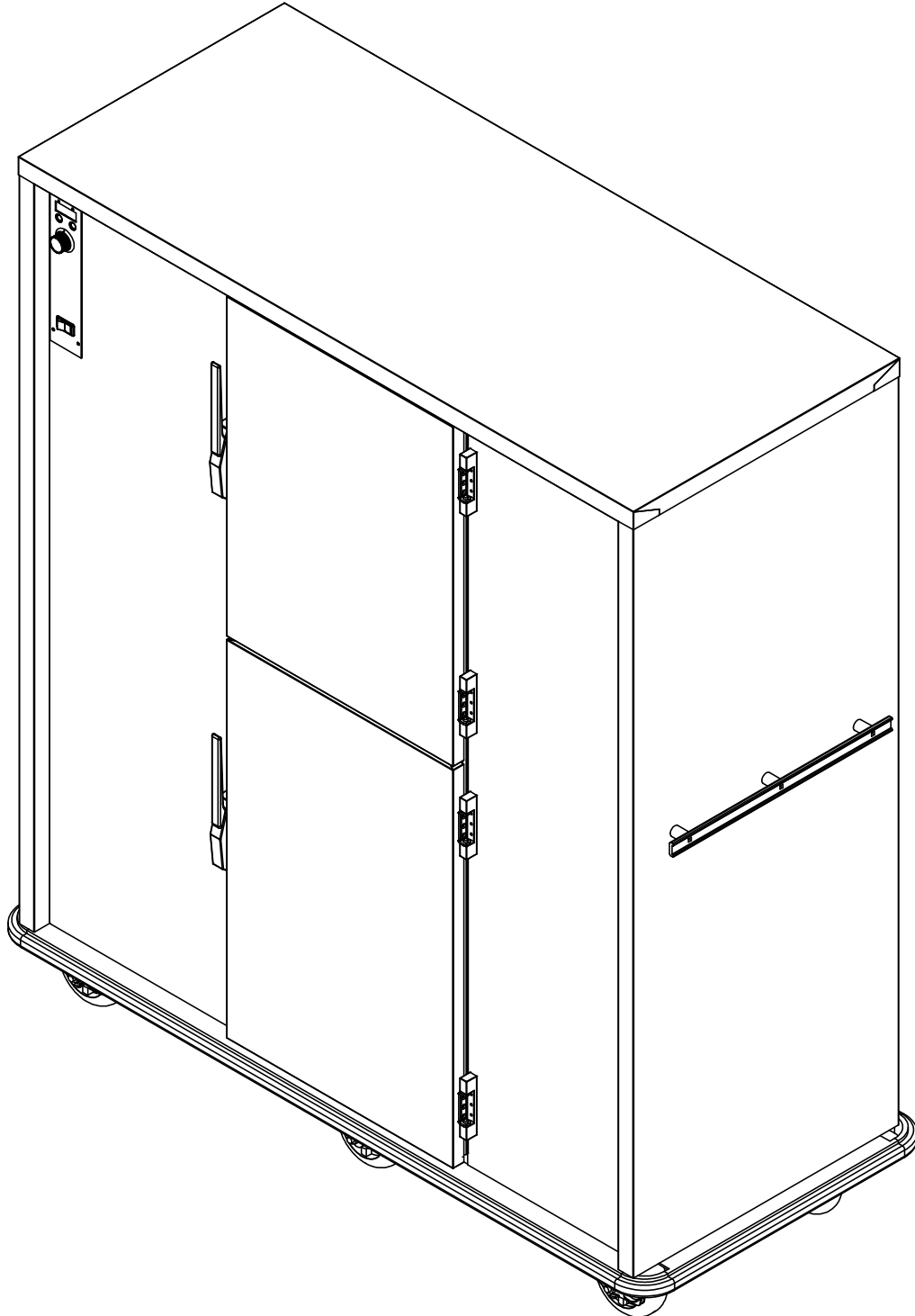
5599 Highway 31 West  
Portland, TN 37148  
(800) 222-4393

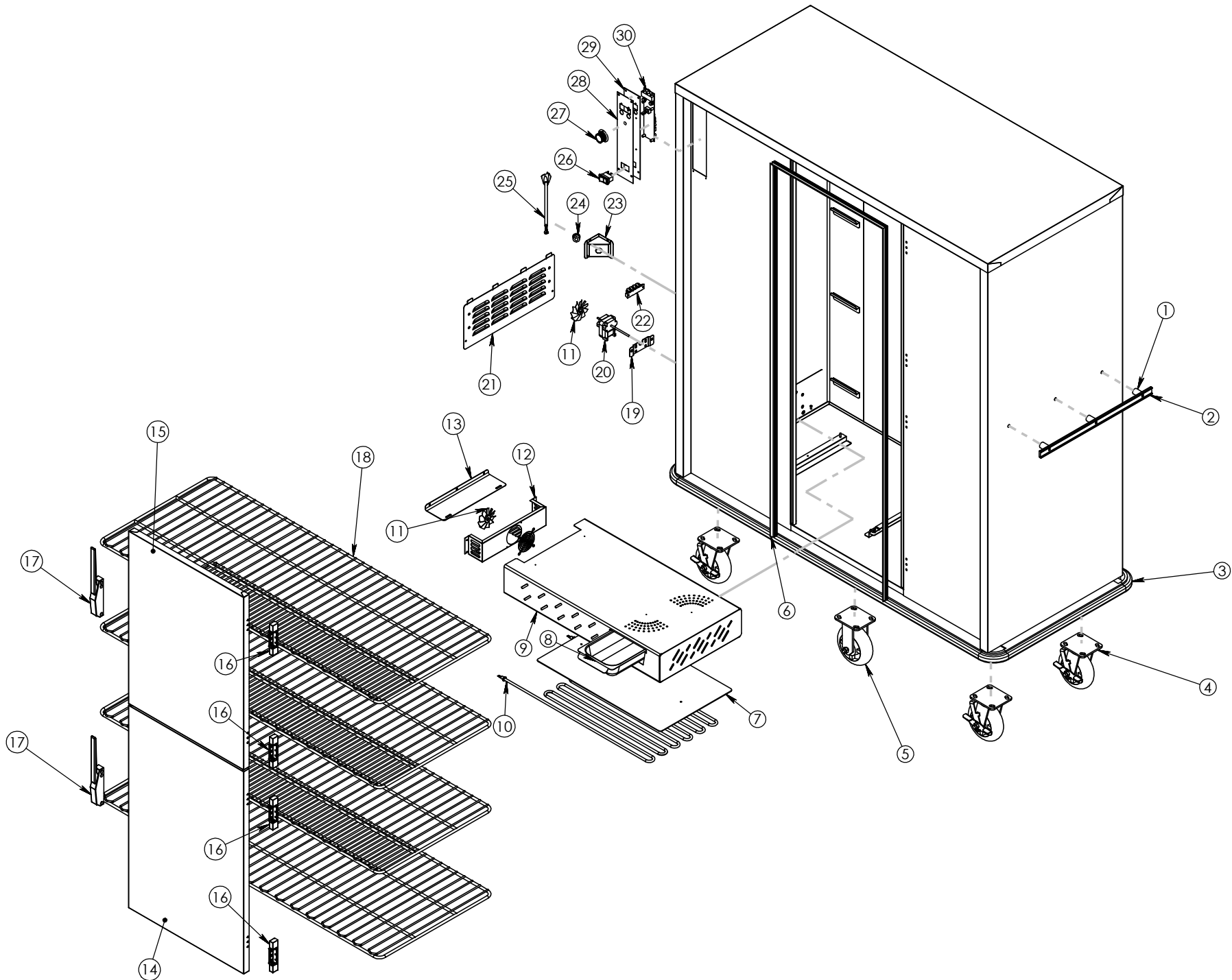
# P-200

Pg.1 . TITLE PAGE

Pg.3 . P-200 BOM

Pg.2 . P-200 EXPLODED





|                              |                          |
|------------------------------|--------------------------|
| DRAWING #: <b>P-200</b>      |                          |
| DESCRIPTION: <b>ASSEMBLY</b> |                          |
| DRAWN BY: DP                 | LAST SAVED BY: dplodzien |

| ITEM NO. | QTY. | PART NO.                           | DESCRIPTION                         |
|----------|------|------------------------------------|-------------------------------------|
| 1        | 6    | <a href="#">SPCR125X.330</a>       | SPACER PUSH HDL 1.25X5/16           |
| 2        | 2    | HDL-215-AL                         | HANDLE PUSH AL 21.5                 |
| 3        | 1    | Z-200-1049                         | BUMPER                              |
| 4        | 4    | CSTR 6 SB-5                        | CASTER 6" SWIVEL CARTWASH CASTER    |
| 5        | 2    | CSTR 6 R-5                         | SUPER DUTY CASTER 6" RIGID POLY/RUB |
| 6        | 1    | GSKT-D-62-500X21-875               | SILICONE DR GASKET D 62.500X21.875  |
| 7        | 1    | <a href="#">50300</a>              | ALUM HTNG ELEMENT CVR               |
| 8        | 1    | <a href="#">WATER-PAN-3RD-WHDL</a> | WATER PAN 2.5" X6.75 X              |
| 9        | 1    | <a href="#">5954</a>               | WATER PAN TUNNEL                    |
| 10       | 1    | <a href="#">EL2000-120HT-XL-28</a> | TUBULAR HEAT ELEMENT 2000W 120V, XL |
| 11       | 2    | BLD FAN AL                         | BLADE FAN AL 3IN 1875-0             |
| 12       | 1    | 5345                               | HUMITEMP BLOWER HSING (P200)        |
| 13       | 1    | <a href="#">4041</a>               | HUMITEMP BLOWER LID                 |
| 14       | 1    | Z-301-4001 (INCLUDES 16,17)        | P-200 DOOR ASSY BTM EDG/EDG RH      |
| 15       | 1    | Z-301-4000 (INCLUDES 16,17)        | P-200 DR TOP EDG/EDG RH SWEEP       |
| 16       | 4    | <a href="#">HNG-214</a>            | DOOR HINGE EDGEMOUNT .875"          |
| 17       | 1    | <a href="#">LTH-DR</a>             | DOOR LATCH EDGEMOUNT STYLE CHROME   |
| 18       | 4    | SHLF-P200                          | SHELF 22.25x54.75"                  |
| 19       | 1    | <a href="#">80610</a>              | BRACKET MOTOR MNT FOR BAY MTR       |
| 20       | 1    | MTR JK120 92                       | MOTOR, 115V                         |
| 21       | 1    | 53454                              | HUMITEMP LOUVER PANEL W/TABS        |
| 22       | 1    | TRM 4QC                            | TERMINAL BLOCK 4QC                  |
| 23       | 1    | 69730                              | HUMI TRI-CORD BRCKET DD .770X .875  |
| 24       | 1    | BSH STRN 4                         | STRAIN RELIEF FOR 20 AMP CORD       |
| 25       | 1    | <a href="#">CRDSET20-115</a>       | CORD 12' 115 VOLT 5-20P 12GA 3 WIRE |
| 26       | 1    | SWH RCK HY60                       | SWITCH NON-LT ON/OFF ROCKER BLK     |
| 27       | 1    | KNB H6                             | KNOB WITH ARROW                     |
| 28       | 1    | CNTRL PNL T-STAT V-G               | OVERLAY, HUMI-TEMP IEC VERTICAL     |
| 29       | 1    | 68432                              | ELECTRONIC T-STAT HY60 SWITCH       |
| 30       | 1    | T-STAT ELE 2                       | ELEC THERMO HEAT CNTRL VERTICAL IEC |

DRAWING #: **P-200**

DESCRIPTION: **ASSEMBLY**

DRAWN BY: DP

LAST SAVED BY: dplodzien