



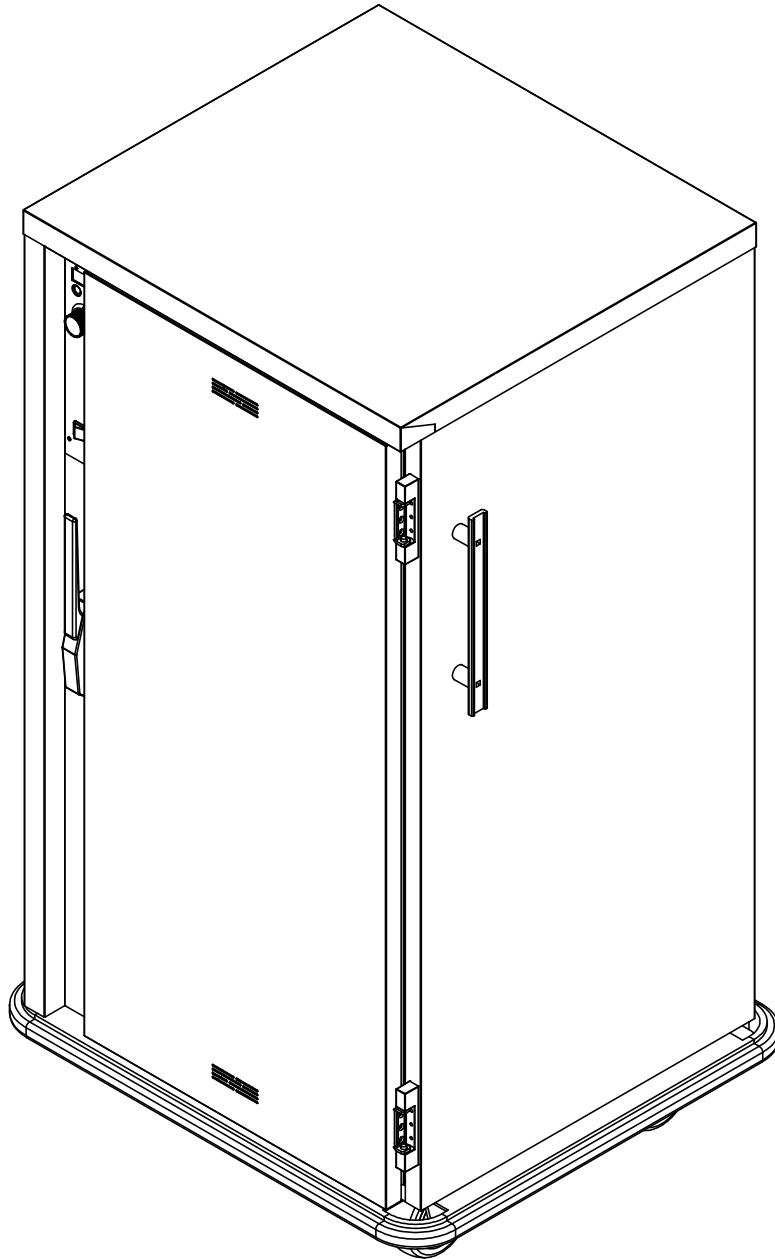
5599 Highway 31 West
Portland, TN 37148
(800) 222-4393

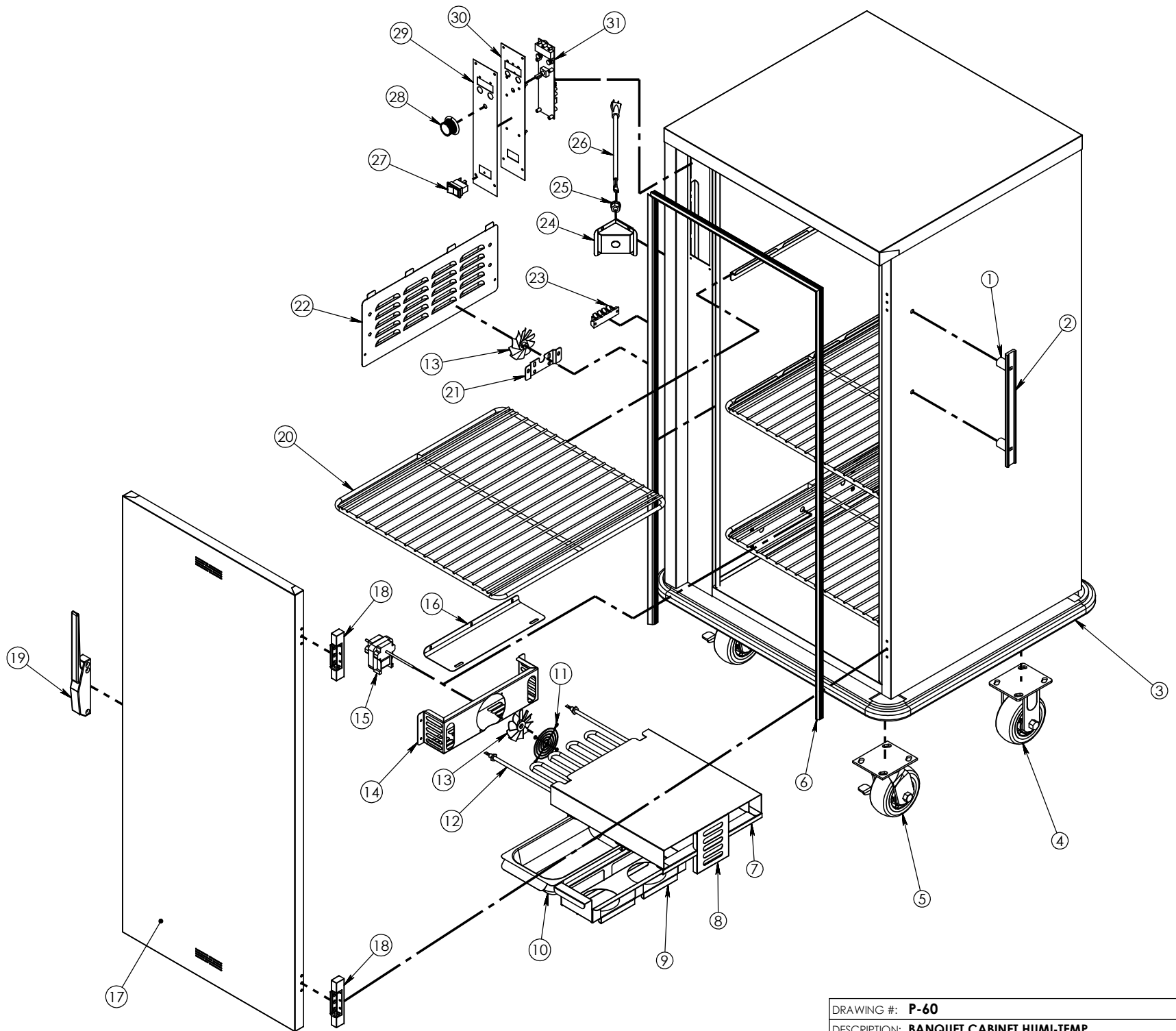
P-60

Pg.1 . TITLE PAGE

Pg.3 . P-60 BOM

Pg.2 . P-60 EXPLODED





DRAWING #: P-60	
DESCRIPTION: BANQUET CABINET HUMI-TEMP	
DRAWN BY: DP	LAST SAVED BY: dplodzien

ITEM NO.	QTY.	PART NO.	DESCRIPTION
1	4	SPCR125X.330	HANDLE SPACERS FOR HDL 21 AND 12.
2	2	HDL-125-AL	HANDLE PUSH ALUMINUM 12.5" LONG
3	1	Z-200-1000	BUMPER
4	2	CSTR 52-R-PPF	CASTER 5" RIGID EZ ROLL POLY
5	2	CSTR 52-SB-PPF	CASTER 5" SWIVEL BRAKE EZ ROLL POLY
6	1	GSKT-D-48-062X21-812	SILICONE DR GASKET D 48.062X21.812
7	4	5217	WATER PAN GUIDE (HUMITEMP TUNNEL)
8	1	58378	HUMITEMP STERNO TUNNEL 15
9	1	58379	STERNO DRAWER
10	1	WATER-PAN-3RD-WHDL	WATER PAN 2.5" X6.75 X
11	1	GRD FAN	FAN GUARD
12	1	EL1250-120-HT	ELEMENT 1250 WATT 120 VOLT 8" HT
13	2	BLD FAN AL	FAN BLADE 3" ALUMINUM
14	1	4011	HUMITEMP BLOWER HOUSING
15	1	MTR JK120 92	MOTOR DUAL SHAFTED 120 VOLT
16	1	4041	HUMITEMP BLOWER LID
17	1	Z-301- 4607 (INCLUDE PARTS 18 & 19)	P-60 DOOR EDG/EDG DOUBLE-VENTED RH
18	2	HNG-214	DOOR HINGE EDGEMOUNT .875"
19	1	LTH-DR	DOOR LATCH EDGEMOUNT STYLE CHROME
20	3	SHLF-P60	SHELF WIRE 22.25"X21.75"
21	1	80610	BRACKET MOTOR MNT FOR BAY MTR
22	1	53454	HUMITEMP LOUVER PANEL W/TABS
23	1	TRM 4QC	TERMINAL BLOCK 4QC
24	1	69729	HUMI TRI-CORD BRCKET DD .672X .750
25	1	BSH STRN 3	STRAIN RELIEF FOR 15 AMP CORD
26	1	CRDSET10-115	CORD 12' 115V 5-15P 14GA 3WR 15AMP
27	1	SWH RCK HY60	SWITCH NON-LT ON/OFF ROCKER BLK
28	1	KNB H6	KNOB WITH ARROW
29	1	CNTRL PNL T-STAT V-G	OVERLAY, HUMI-TEMP IEC VERTICAL
30	1	68432	ELECTRONIC T-STAT HY60 SWITCH
31	1	T-STAT ELE 2	ELEC THERMO HEAT CNTRL VERTICAL IEC

DRAWING #: **P-60**

DESCRIPTION: **BANQUET CABINET HUMI-TEMP**

DRAWN BY: DP

LAST SAVED BY: dplodzien