



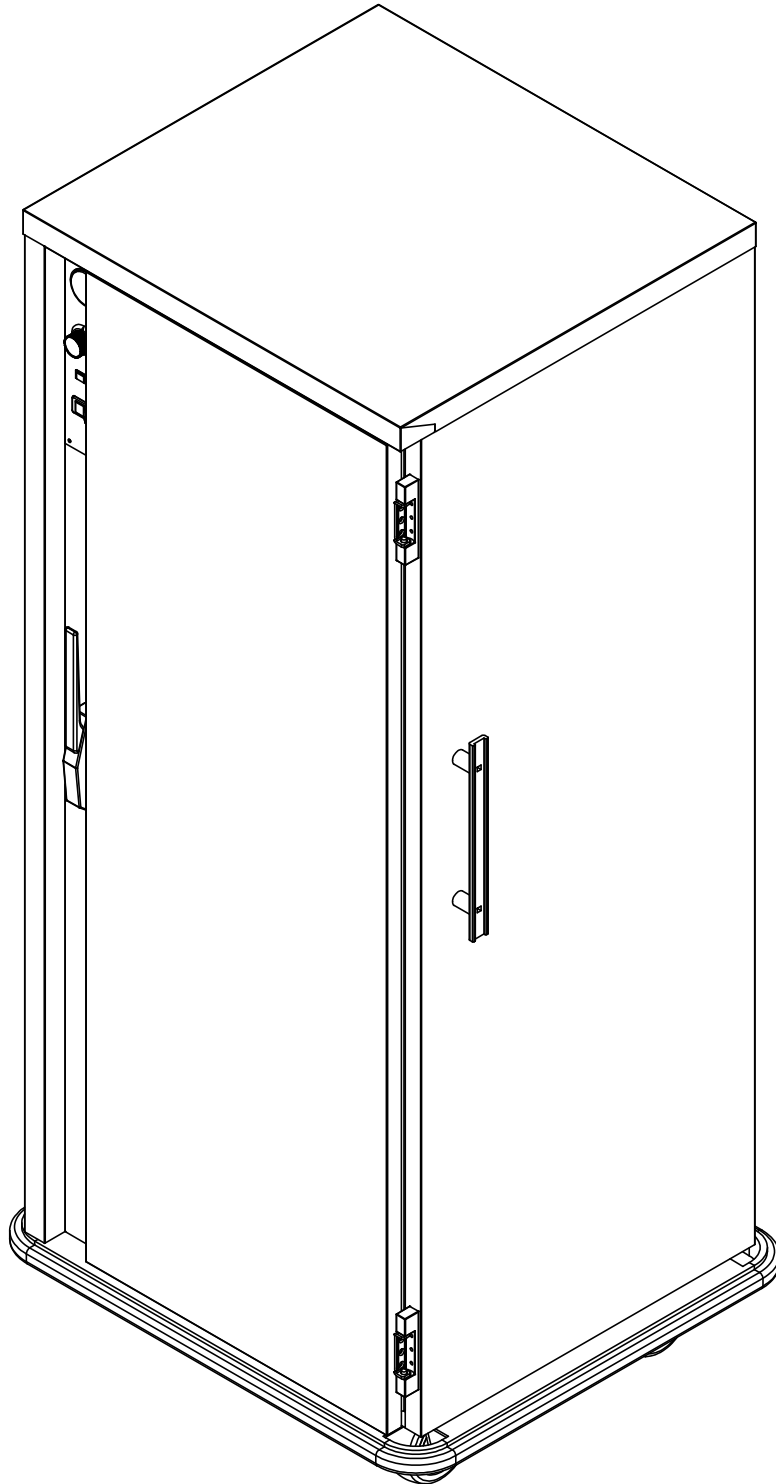
5599 Highway 31 West
Portland, TN 37148
(800) 222-4393

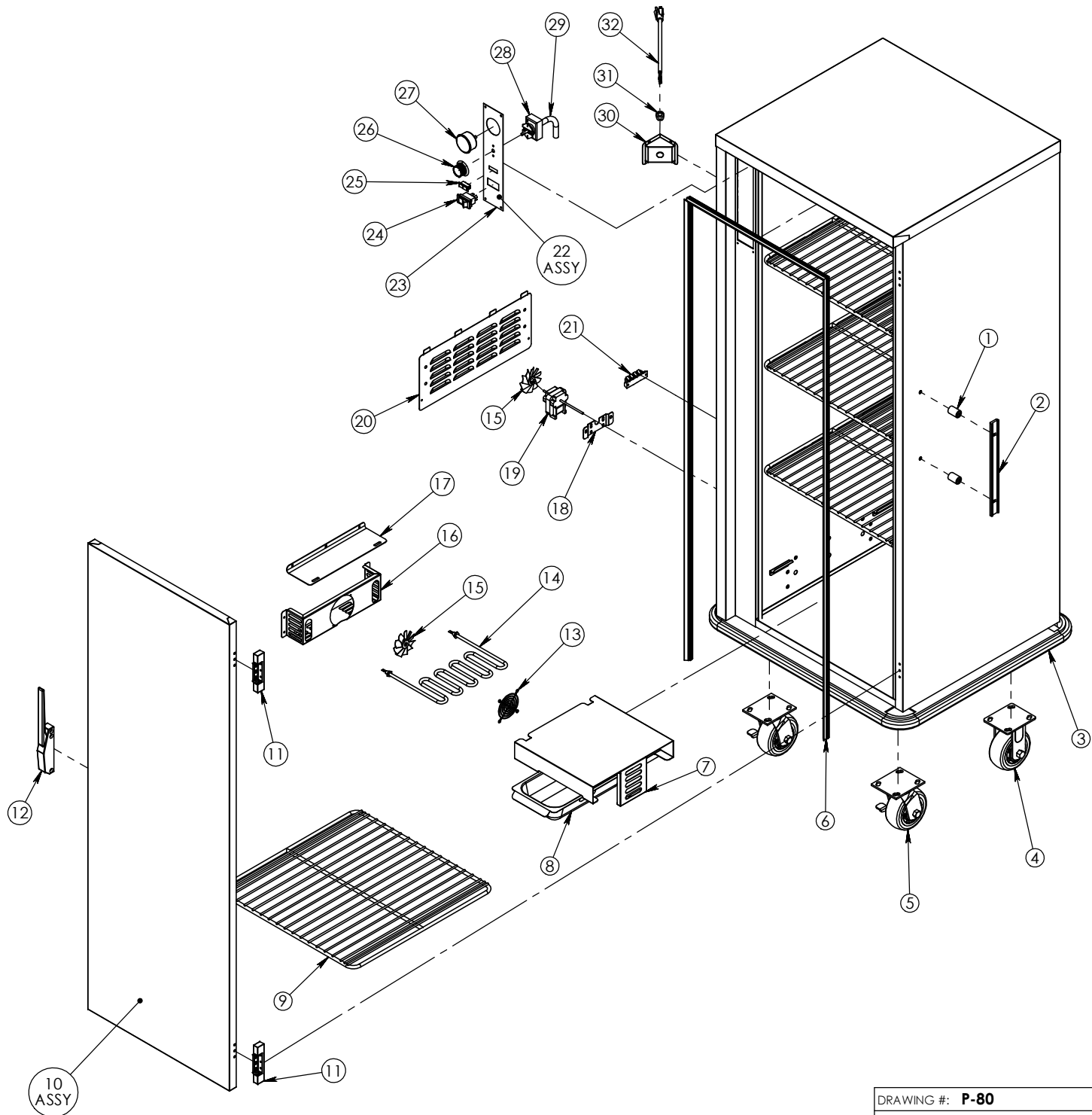
P-80

Pg.1 . TITLE PAGE

Pg.3 . P-80 BOM

Pg.2 . P-80 EXPLODED





DRAWING #: P-80	
DESCRIPTION: BANQUET CABINET HUMI-TEMP	
DRAWN BY: DP	LAST SAVED BY: dplodzien

ITEM NO.	QTY.	PART NO.	DESCRIPTION
1	4	SPCR125X.330	HANDLE SPACERS FOR HDL 21 AND 12.
2	2	HDL-125-AL	HANDLE PUSH ALUMINUM 12.5" LONG
3	1	Z-200-1000	BUMPER P-80
4	2	CSTR 52-R-PPF	CASTER 5" RIGID EZ ROLL POLY
5	2	CSTR 52-SB-PPF	CASTER 5" SWIVEL BRAKE EZ ROLL POLY
6	1	GSKT-D-21-875X62-500	SILICONE DR GASKET D 21.875X62.500
7	1	58408	UHS-12 HEAT SHIELD USE WITH H20 PAN
8	1	WATER-PAN-3RD-WHDL	WATER PAN 2.5" X6.75 X
9	4	SHLF-P60	SHELF WIRE 22.25"X21.75"
10	1	Z-301-4057 INCLUDES (11,12)	P-80 DOOR ASSY EDG/EDG
11	2	HNG-214	DOOR HINGE EDGEMOUNT .875"
12	1	LTH-DR	DOOR LATCH EDGEMOUNT STYLE CHROME
13	1	GRD FAN	FAN GUARD
14	1	EL1250-120-HT	ELEMENT 1250 WATT 120 VOLT 8" HT
15	2	BLD FAN AL	FAN BLADE 3" ALUMINUM
16	1	4011	HUMITEMP BLOWER HOUSING
17	1	4041	HUMITEMP BLOWER LID
18	1	80610	BRACKET MOTOR MNT FOR BAY MTR
19	1	MTR JK120 92	MOTOR DUAL SHAFTED 120 VOLT
20	1	53454	HUMITEMP LOUVER PANEL W/TABS
21	1	TRM 4QC	TERMINAL BLOCK 4QC
22	1	Z-600-1014 INCLUDES (23-29)	HUMITEMP MANUAL CONTROL PANEL 120V
23	1	CNTRL-PNL-HUMI-TEMP-AL	ALUM PANEL FOR HUMI-TEMP
24	1	SWH RCK E1	SWITCH NON-LT ROCKER 125/250V 20AMP
25	1	LT PLT A-G	INDICATOR LIGHT AMBER GREEN 125V
26	1	KNB H6	KNOB WITH ARROW
27	1	T-METER H1	THERMOMETER 100-220
28	1	T-STAT H1	THERMOMSTAT HEAT CONTRL 90-190 36"
29	1	SLV-ACRYLIC-WHITE-7-16 @ 25"	SLEEVING ACRYLIC 7/16 ID WHITE FA1
30	1	69729	HUMI TRI-CORD BRCKET DD .672X .750
31	1	BSH STRN 3	STRAIN RELIEF FOR 15 AMP CORD
32	1	CRDSET10-115	CORD 12' 115V 5-15P 14GA 3WR 15AMP

DRAWING #: P-80	
DESCRIPTION: BANQUET CABINET HUMI-TEMP	
DRAWN BY: DP	LAST SAVED BY: dplodzien