



Grand Rapids, Michigan, U.S.A. 49504-5298

USER'S OPERATING AND INSTRUCTION MANUAL

MODEL 1508-M

MANUAL TRAY LIDDER



INDEX

SAFETY INSTRUCTIONS.....	1508S20015
SET UP.....	1508S20016
OPERATING PROCEDURE.....	1508S20017
ADJUSTMENTS.....	1508S20018
TECHNICAL SPECIFICATIONS.....	1508S20019
CLEANING.....	1508S20020
TROUBLE SHOOTING.....	1508S20021
ASSEMBLIES	
HEATER PLATEN ASSEMBLY	1508S20022
PLATEN PUSHER ASSEMBLY	1508S20023
FINAL ASSEMBLY.....	1508S20024
MACHINE EXCHANGE PROGRAM.....	GEN 050819
WARRANTY.....	GEN 040225
WARRANTY PROCEDURE.....	GEN 040226
RETURNED PARTS POLICY.....	GEN 040227



1508M MANUAL LIDDER

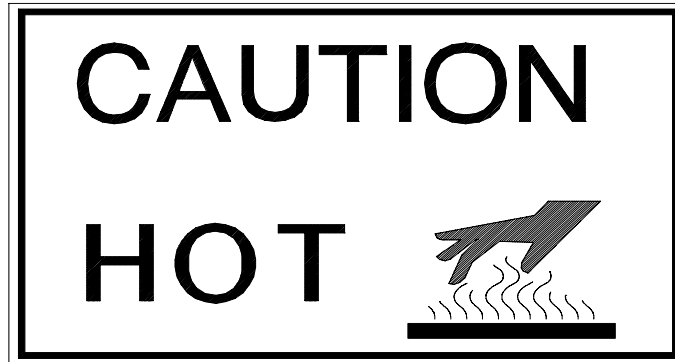
SAFETY

Various safety devices and methods of guarding have been provided on this machine. It is essential, however, that machine operators and maintenance personnel observe the following safety precautions. Improper installation or operation of this equipment may cause injury to personnel or damage to equipment.

- Before operating the *Manual Lidder* read through this manual. Never allow an untrained person to operate this machine.

CAUTION

- **CAUTION HOT:** The heater cover and upper platen are very **HOT!** Caution must be used to protect yourself and others.



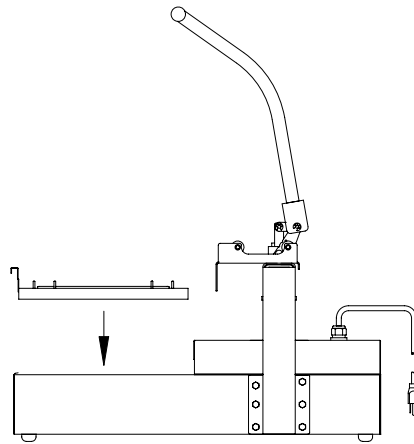
- In addition to these general safety instructions, follow the specific instructions given throughout this manual.



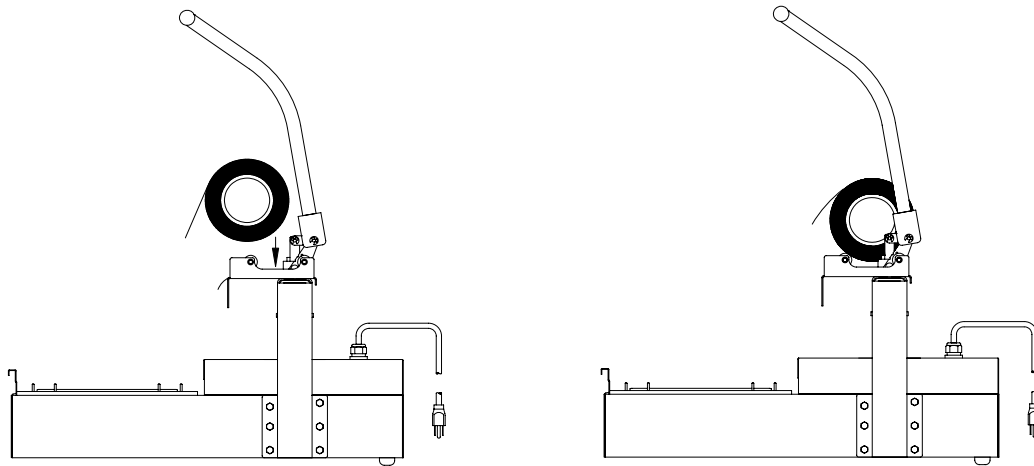
1508M MANUAL LIDDER

SET UP

1. Unpack and carefully remove the *Manual Lidder*. Check for completeness of your order and that none of the items have been damaged during shipment.
2. Screw the four rubber feet in to place on the bottom of the machine.
3. Place the *Manual Lidder* in a suitable location that provides adequate working space. The location must be sturdy, level, and capable of holding 50 lbs. per machine.
4. Plug the power cord into a grounded electrical outlet. The *Manual Lidder* requires single phase 110 VAC, 60 Hertz with 10 ampere (minimum) circuit breaker protection.
5. Install the tray carrier:



6. Load lid dispenser:





1508M MANUAL LIDDER

OPERATING PROCEDURE

1. To turn the machine on plug in the power cord. **Wait 40 minutes** to allow the heated upper platen to reach temperature.
2. Place a tray in the tray carrier.
3. Position a single lid on the tray. Use the retractable pins on the tray carrier to center the lids over the tray. **Be sure the adhesive side of the lid is down.**

NOTE

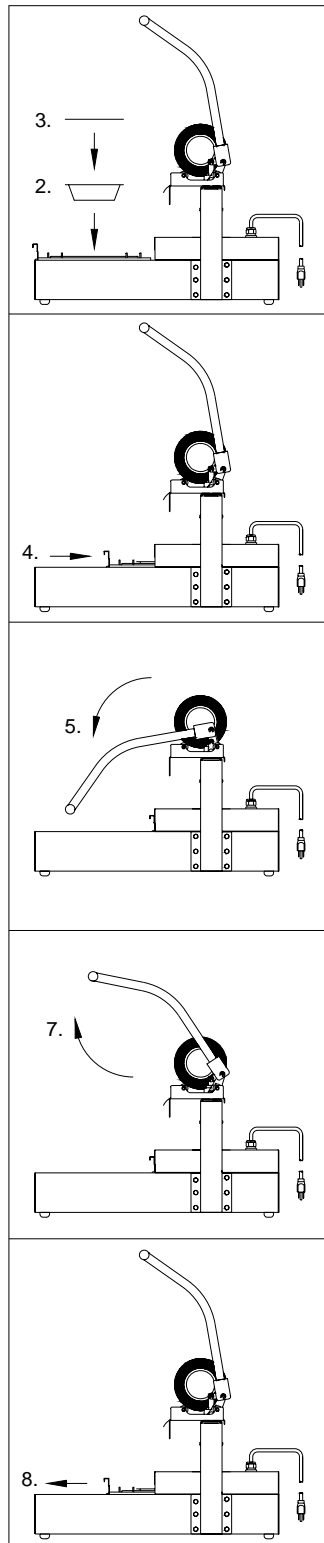
- The adhesive side of the lid can be determined by pinching a fold and rubbing the lid material against itself. Test both sides of the lid. The rough or tacky side of the lid will be the adhesive side.
4. Push the tray carrier into the *Manual Lidder* until it stops.

NOTE

- Actuating machine with no tray or lid in place may cause the tray carrier to stick closed.
5. Rotate the handle down into the locked position. (Do not force handle)
 6. Wait 1 second.
 7. Rotate the handle up to the start position.
 8. Pull the tray carrier out of the manual lidder.
 9. Remove the lidded tray by pushing up on the bottom of the tray and lifting from tray carrier.



1508M MANUAL LIDDER





1508M MANUAL LIDDER

TECHNICAL SPECIFICATIONS

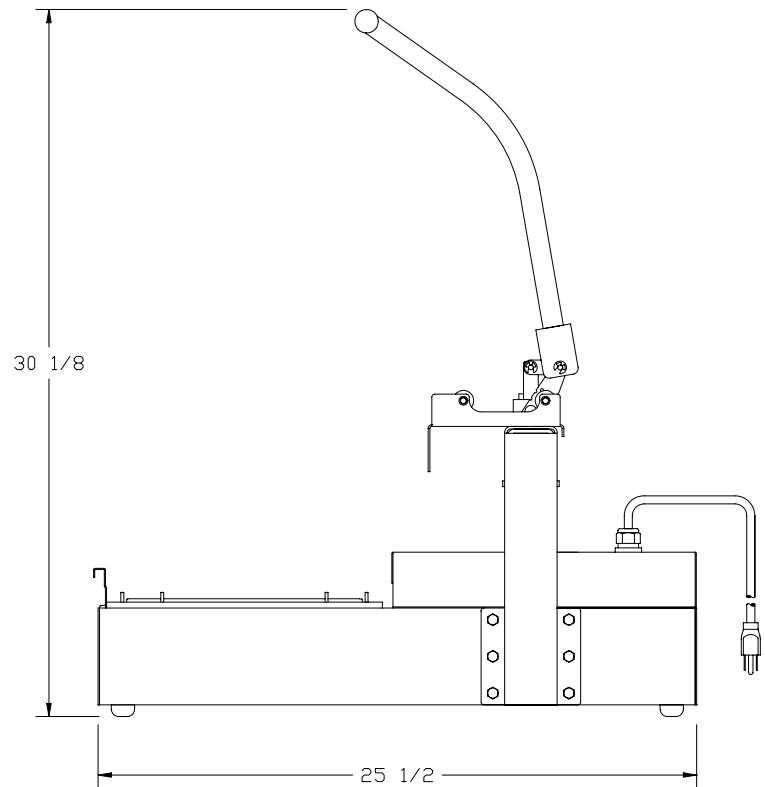
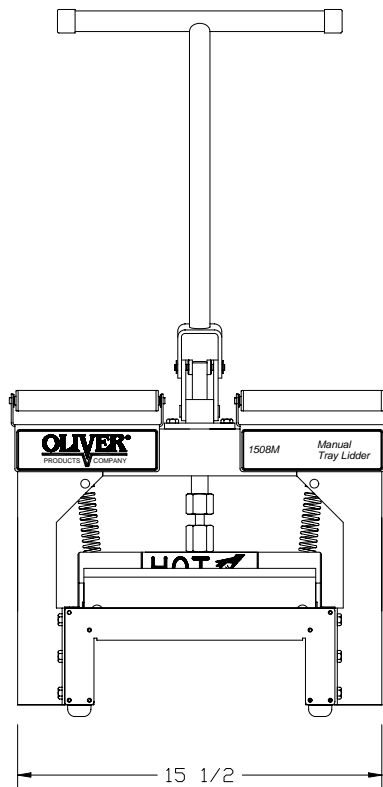
Tray Capacities:

8" (203mm) by 9.75" (248mm) maximum top-outside-dimension tray.

Temperature Range:

50°F (10°C) to 300°F (149°C)

Machine Dimensions:



Weight:

55 lbs. (22.7 kg)

Electrical:

115 VAC, 8 Amps, Single Phase, 50/60 Hz **OR**
230 VAC, 4 Amps, Single Phase, 50/60 Hz



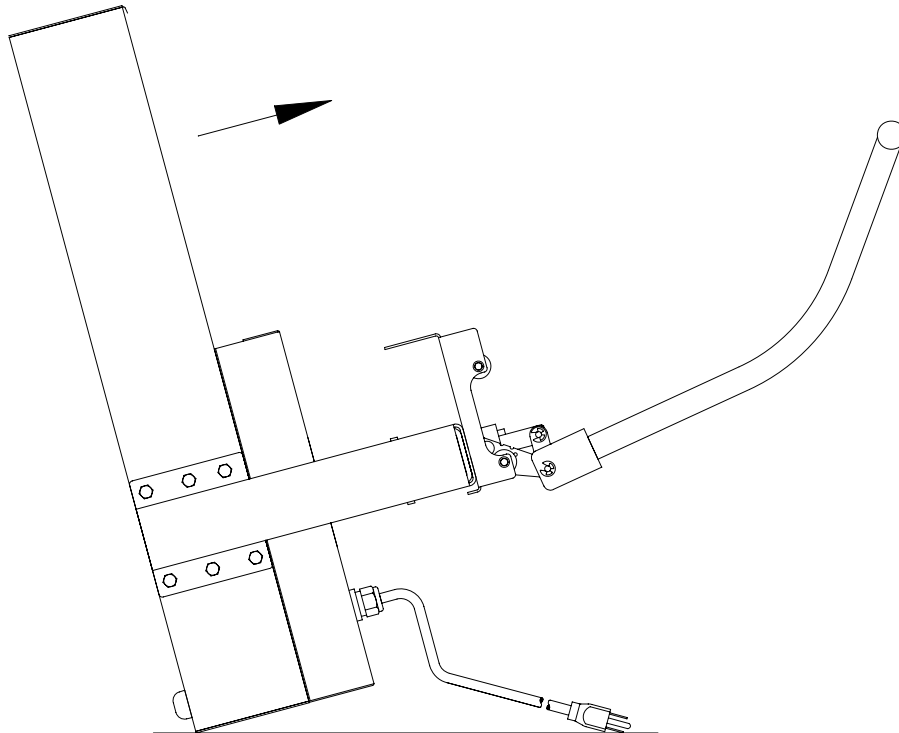
1508M MANUAL LIDDER

CLEANING

- If the machine has been operating, allow the unit to cool before cleaning.

CAUTION

- **CAUTION HOT:** The heater cover and upper platen are very **HOT!** Caution must be used to protect yourself and others.
- Make sure the unit has been unplugged from power before cleaning.
- Clean the *Manual Lidder* with a mild cleaner and a damp cloth.
- To clean or access the heated upper platen: remove the tray carrier and lidding material and tip machine back (see setup).



CAUTION

- **MAKE SURE UNIT IS SECURE AND WILL NOT TIP OVER**
- Use a copper scouring pad to clean heated upper platen. Allow platen to cool before attempting to clean.



1508M MANUAL LIDDER

TROUBLE SHOOTING

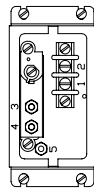
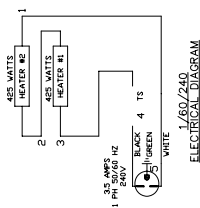
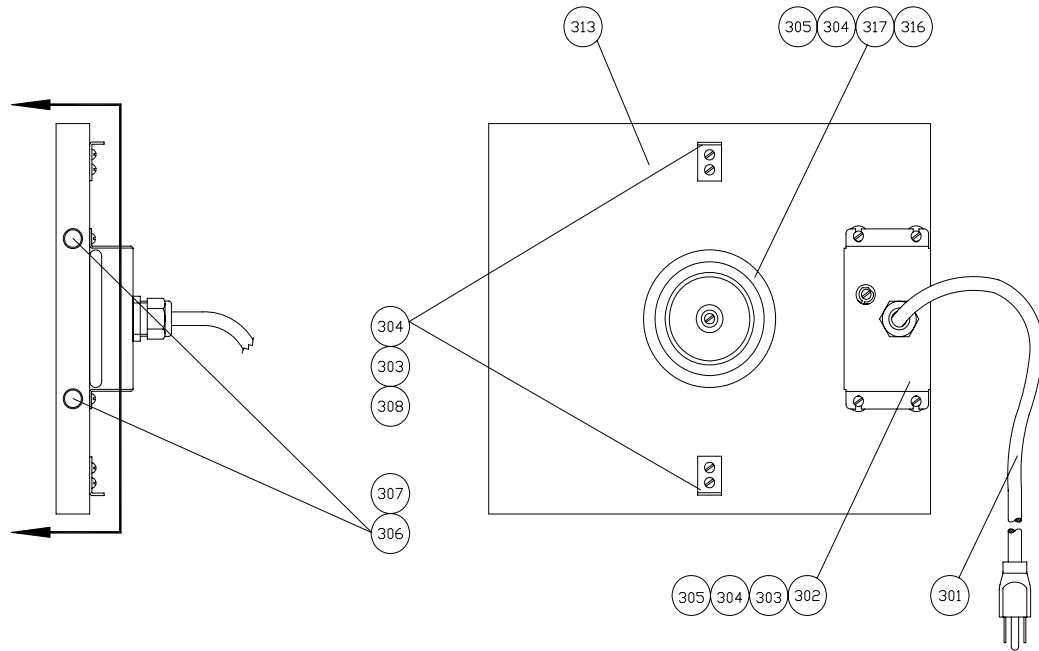
SYMPTOM	CORRECTIVE ACTION
Heater will not power up	<ol style="list-style-type: none">1. Verify that the power cord is plugged in2. Press Reset on the circuit breaker
Lid folding, shifting or sliding off machine	<ol style="list-style-type: none">1. Verify that the adhesive side of the lid is down2. Verify that the trays are not over filled3. Clean the heated upper platen
Poor seal quality ↵ Allow seal to cool before checking quality	<ol style="list-style-type: none">1. Verify the temperature setting (adjustments)2. Clean the upper platen (cleaning)

Oliver Products Company 24 hr emergency service (800) 554-5603



1508M MANUAL LIDDER

HEATER PLATEN ASSEMBLY



305

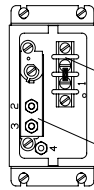
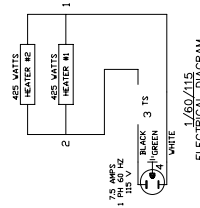
304

303

312

311

310

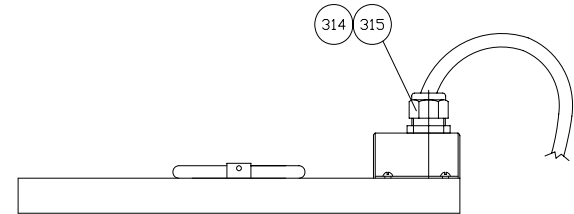


305

304

303

309



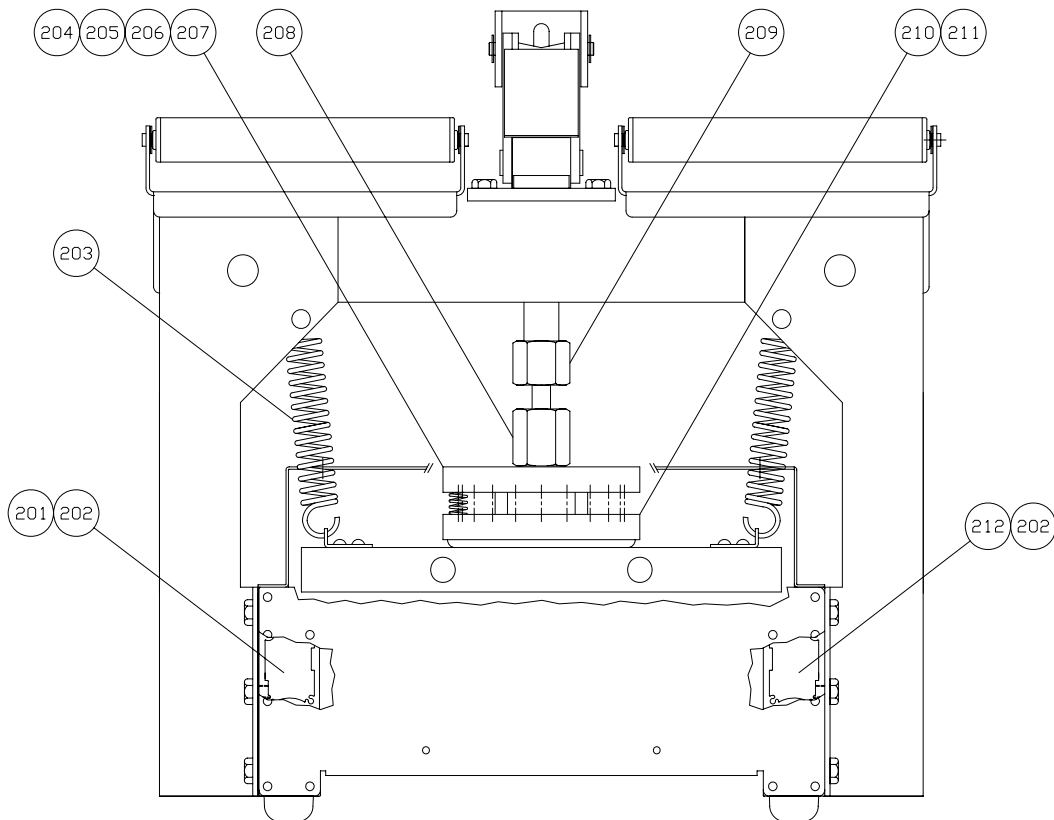
ITEM	PART NUMBER	DESCRIPTION	QUAN.	DWG
301	1508-0021	CORD-POWER	1	C
302	1508-0013	BOX-ELECTRICAL	1	C
303	5843-5210	SCRW-RD HD 6-32x1/4	12	PUR
304	5851-9353	WSHR-#6 MD SPRNG LCK	14	PUR
305	5851-9300	WSHR-#6 FLAT 18-8	11	PUR
306	5730-1574	HTR-CRTRDGE 1/2" x 8"	2	PUR
307	5768-1289	TERM-#6 RING 18-22 GA	1	PUR
308	1508-0009	SPRING CLIP	2	C
309	5757-9733	THERMOSWTCB-SURF MNT	1	PUR
310	5770-7462	BLK-TERM 2 POSITION	1	PUR
311	5770-7461	JMPR-TERMINAL BLOCK	1	PUR
312	5843-5212	SCRW-RD HD 6-32x1/2	2	PUR
313	1508-0003-1	UPPR HTR PLATTEN LRG.	1	D
314	5770-4817	RLF-STRN STR 1/2"	1	PUR
315	5766-7750	NUT-LCK APPLETON#BL50	1	PUR
316	6516-0070	INSULATOR-PUSHER SLCN	1	C
317	5843-5211	SCRW-RD HD 6-32x3/8	1	C



1508M MANUAL LIDDER

PLATEN PUSHER ASSEMBLY

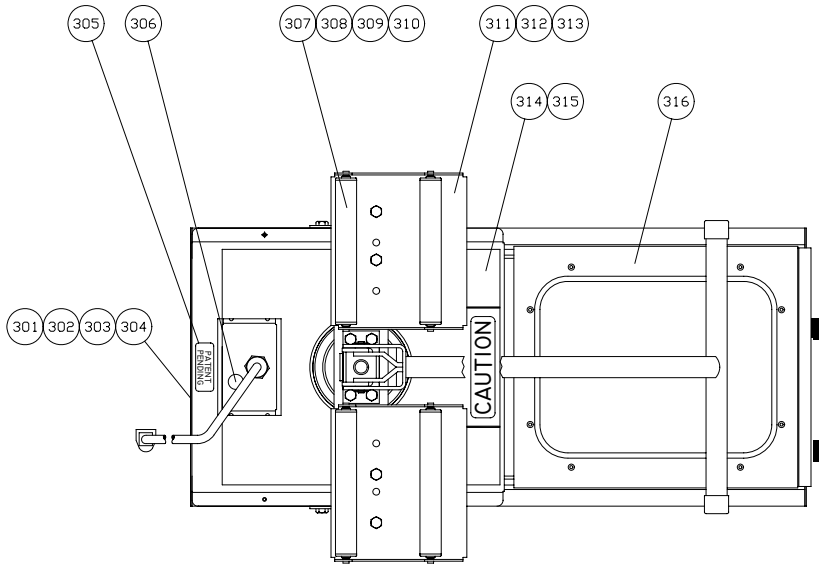
ITEM	PART NUMBER	DESCRIPTION	QUAN.	DWG
201	1508-0001-1011	RAIL-R. H. MANUAL UNIT	1	C
202	1508-0024-1	RDD-SLIDE 25 5/16' LG.	4	C
203	7024-4104	SPRING-TENS. 3/4x2 1/2	2	PUR
204	1508-0040	PUSHER UPPR HTR PLATEN	1	C
205	5843-1002	SCREW-HEX HD 1/4-20	25	PUR
206	5851-9304	WASHER-1/4' FLAT STST	1	PUR
207	5842-8994	SCREW-SHOULDER 1/4x3/4	2	PUR
208	1508-0041	SHAFT ADJUSTMENT	1	C
209	1508-0042	NUT-HEX LOCK	1	C
210	1508-0039	PUSHER LOWR HTR PLATEN	1	C
211	7011-2102	SPRING-COMPRESSION	32	PUR
212	1508-0001-1002	BASE-LEFT HAND	1	C



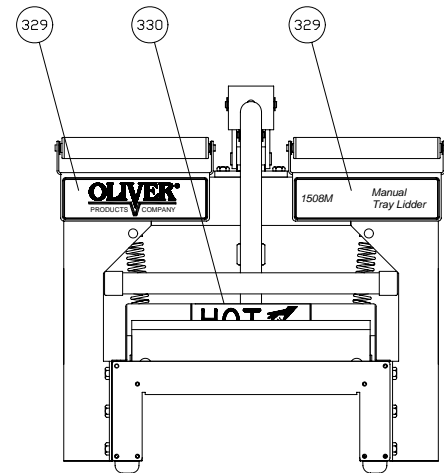
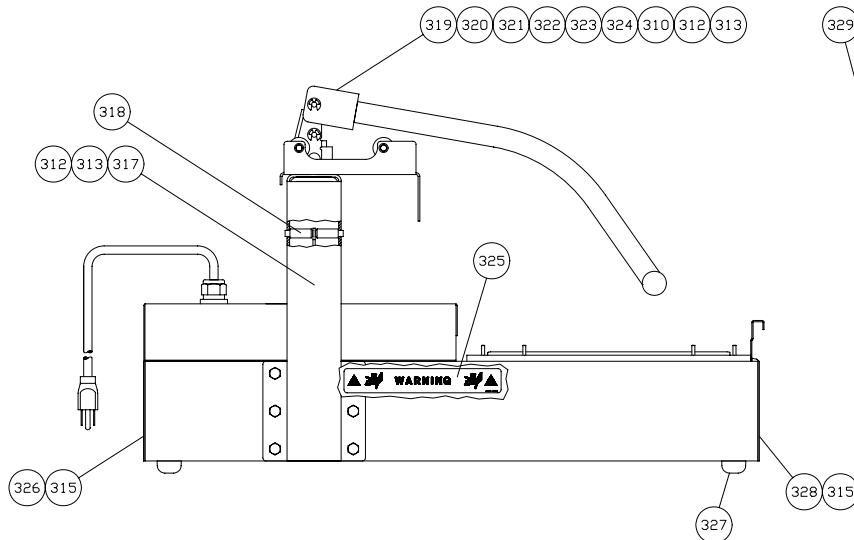


1508M MANUAL LIDDER

FINAL ASSEMBLY



ITEM	PART NUMBER	DESCRIPTION	QUAN.	DWG
301	6400-5006	NMPLT-ETL USA/CAN LBL	1	PUR
302	6401-5066	NMPLT-OLVR 24HR EMER	1	PUR
303	6401-5048	NMPLT-OLVR W/ELEC	1	PUR
304	5840-3501	POP RIVET 1/8 STST	4	PUR
305	6401-6002	NMPLT-PAT. PEND. PRNT	1	PUR
306	5765-4732	PLUG SNAP BTN. 1/2"	1	PUR
307	1508-0044	ROD FILM DISPENSER	4	C
308	4639-1414-1111	TUBE-ALUM. 7/8x5 7/8	4	PUR
309	5252-3002	BRNG-ROLL END BSTN	8	PUR
310	5840-1273	RING-RET'G TRUARC	12	PUR
311	1508-0043	FRAME-FILM DISPENSER	2	C
312	5843-1002	SCREW-HEX HD 1/4-20	25	PUR
313	5851-9357	WSHR-LCK 1/4 SS SPRNG	25	PUR
314	1508-0014-1	COVER MAIN SHIELD	1	D
315	5843-5210	SCRW-RD HD 6-32x1/4	33	PUR
316	1508-XXXX	TRAY HOLDER	1	C
317	1508-0002	LEG-ARCH	2	C
318	1508-0019	PIN-SPRING SUPPORT	2	C
319	1508-0045	BRACKET TUBE CLAMP	1	C
320	1508-0046	HANDLE	1	C
321	1508-0047	PIN CLAMP BRACKET	1	C
322	1508-0048	PIN CLAMP PUSHER ROD	1	C
323	1508-0049	CLAMP PRESSURE	1	C
324	5105-5250	CAP PROTECTIVE VINYL	2	PUR
325	6402-3009	NMPLT-WARNING W/PICT	2	PUR
326	1508-0006-1	COVER - REAR	1	C
327	5902-0035	BUMPER-RUBBER W/SCRW	4	PUR
328	1508-0005-1	COVER - FRNT	1	C
329	1508-0050	DECAL-OLIVER 1508M	1	C
330	6400-3017	SIGN-CAUT'N HDT W/HND	1	PUR





WARRANTY

PARTS

Oliver Packaging & Equipment Company (Oliver) warrants that if any part of the equipment (other than a part not manufactured by Oliver) proves to be defective (as defined below) within one year after shipment, and if Buyer returns the defective part to Oliver within one year, Freight Prepaid to Oliver's plant in Grand Rapids, MI, then Oliver, shall, at Oliver's option, either repair or replace the defective part, at Oliver's expense.

LABOR

Oliver further warrants that equipment properly installed in accordance with our special instructions, which proves to be defective in material or workmanship under normal use within one (1) year from installation or one (1) year and three (3) months from actual shipment date, whichever date comes first, will be repaired by Oliver or an Oliver Authorized Service Dealer, in accordance with Oliver's published Service Schedule.

For purposes of this warranty, a defective part or defective equipment is a part or equipment which is found by Oliver to have been defective in materials workmanship, if the defect materially impairs the value of the equipment to Buyer. Oliver has no obligation as to parts or components not manufactured by Oliver, but Oliver assigns to Buyer any warranties made to Oliver by the manufacturer thereof.

This warranty **does not** apply to:

1. Damage caused by shipping or accident.
2. Damage resulting from improper installation or alteration.
3. Equipment misused, abused, altered, not maintained on a regular basis, operated carelessly, or used in abnormal conditions.
4. Equipment used in conjunction with products of other manufacturers unless such use is approved by Oliver Products in writing.
5. Periodic maintenance of equipment, including but not limited to lubrication, replacement of wear items, and other adjustments required due to installation, set up, or normal wear.
6. Losses or damage resulting from malfunction.

The foregoing warranty is in lieu of all other warranties expressed or implied AND OLIVER MAKES NO WARRANTY OF MERCHANTABILITY OR FITNESS FOR PURPOSE REGARDING THE EQUIPMENT COVERED BY THIS WARRANTY. Oliver neither assumes nor authorizes any person to assume for it any other obligations or liability in connection with said equipment. OLIVER SHALL NOT BE LIABLE FOR LOSS OF TIME, INCONVENIENCE, COMMERCIAL LOSS, INCIDENTAL OR CONSEQUENTIAL DAMAGES.



Oliver Packaging & Equipment Company
511 Sixth Street NW • Grand Rapids, MI 49504

(800) 253-3893
www.oliverquality.com

WARRANTY PROCEDURE

1. If a problem should occur, either the dealer or the end user must contact the Parts and Service Department and explain the problem.
2. The Parts and Service Manager will determine if the warranty will apply to this particular problem.
3. If the Parts and Service Manager approves, a Work Authorization Number will be generated, and the appropriate service agency will perform the service.
4. The service dealer will then complete an invoice and send it to the Parts and Service Department at Oliver Products Company.
5. The Parts and Service Manager of Oliver Packaging and Equipment Company will review the invoice and returned parts, if applicable, and approve for payment.



Oliver Packaging & Equipment Company
511 Sixth Street NW • Grand Rapids, MI 49504

(800) 253-3893
www.oliverquality.com

RETURNED PARTS POLICY

This policy applies to all parts returned to the factory whether for warranted credit, replacement, repair or re-stocking.

Oliver Packaging and Equipment Company requires that the customer obtain a Return Material Authorization (RMA) number before returning any part. This number should appear on the shipping label and inside the shipping carton as well. All parts are to be returned prepaid. Following this procedure will insure prompt handling of all returned parts.

To obtain an RMA number contact the Repair Parts Department toll free at (800) 253-3893.

Parts returned for re-stocking are subject to a **RE-STOCKING CHARGE**.

Thank you for your cooperation,

Repair Parts Manager
Oliver Packaging and Equipment Company