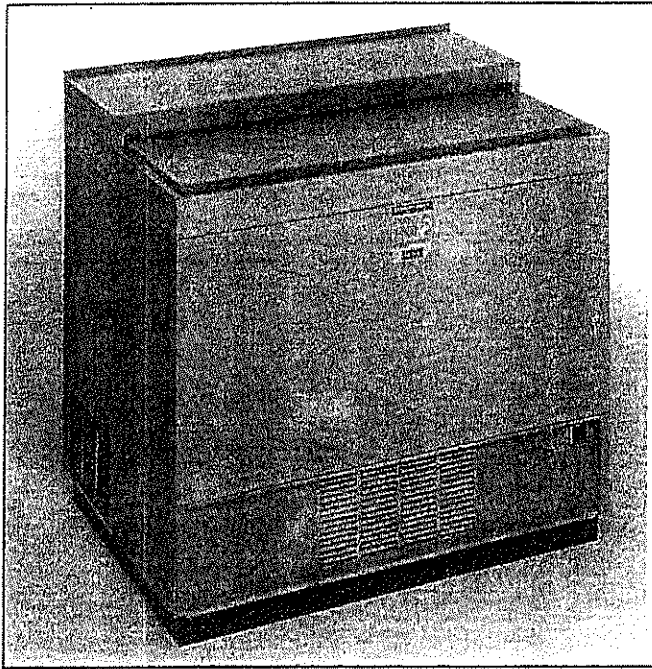




Item No. _____

INSTALLATION and OPERATION INSTRUCTIONS

Glass Froster



Model Nos.
8340
8350
8365A

Table of Contents

Cabinet Specifications	2
Installing	
Shelves	3
Backsplash	3
Placing and Leveling	3
Sealing to the Floor	3
Defrost System	4
Temperature Control	4
Cleaning	4
Replacement Parts	5
Wiring Diagram	6
Cleaning Stainless Steel	7

IMPORTANT WARRANTY INFORMATION

A Warranty card is enclosed that must be filled out and mailed to the Perlick Corporation in order to register the warranty. If the card is not returned to Perlick, the warranty period will begin from the date the equipment is shipped from the factory.

This manual has been prepared to assist you in the installation of your Glass Froster and to acquaint you with its operation and maintenance.

We dedicate considerable time to ensure that our products provide the highest level of customer satisfaction. If, however, service is required, your dealer can provide you with a list of qualified service agents. For your own protection, never return merchandise for credit without our approval.

We thank you for selecting a Perlick product and assure you of our continuing interest in your satisfaction.



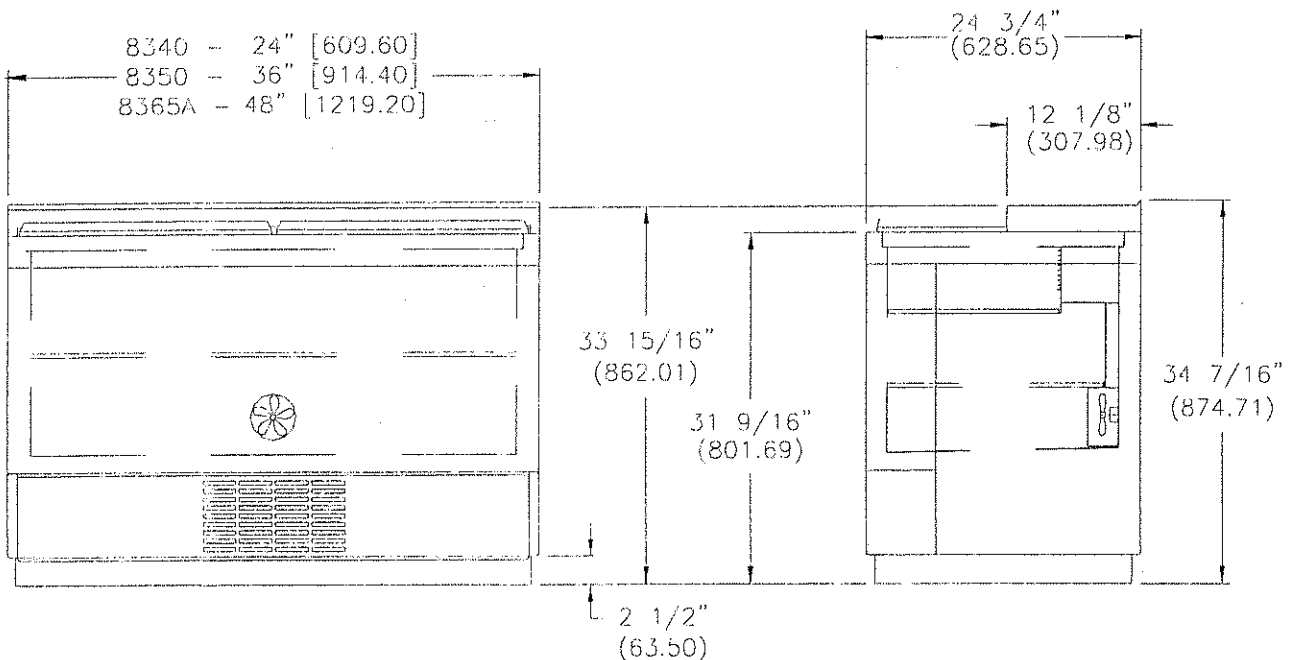
8300 West Good Hope Road
Milwaukee, WI 53223
Phone: 414-353-7060 Fax: 414-353-7069

CABINET SPECIFICATIONS

GLASS FROSTERS

		Two Foot	Three Foot	Four Foot
MODEL	BLACK PAINTED	8340P*	8350P*	8365AP*
	STAINLESS STEEL	8340*	8350*	8365A*
SHIPPING WEIGHT lbs. (kg.)		200 (91)	255 (115)	285 (129)
INSIDE DIMENSIONS L x D x H		20" x 18" x 18" (3.75 cu. ft.) 508 mm x 457 mm. x 457 mm (.11 m³)	32" x 18" x 18" (6 cu. ft.) 813 mm. x 457 mm. x 457 mm. (.17m³)	44" x 18" x 18" (8.25 cu. ft.) 1118 mm. x 457 mm. x 457 mm. (.24 m³)
PLATE/GLASS CAPACITY		96 Plates	196 Plates	216 Plates
With 1 Shelf (3" o.d.)		60 Glasses	96 Glasses	135 Glasses
With 2 Shelves (3" o.d.)		80 Glasses	153 Glasses	185 Glasses
COND. UNIT H.P.		1/4	1/3	1/3
AMPS		6.6	6.9	6.9
INTERIOR		Inner liner Type 304 stainless steel. Vinyl-covered bottom rack(s). Optional shelving available. (See *Note.)		
EXTERIOR		All Models: Top and front rail stainless steel. Heavy-duty stainless steel doors with integral handles. Black galvanized island base. Galvanized back and rear grille. Black Painted Models: Front and sides are steel finished with flat black baked-on enamel. Black painted front grille. Stainless Steel Models: Type 304 stainless steel front, ends and grey painted front grille.		
ELECTRICAL		115 V, 60 Hz., 1 ph. Furnished with 6 foot rubber plug-in cord (115 V model only). Also available in 230 Volt, 50 Hz., 1 Phase AC.		
PLUMBING		None required. Moisture drains to self-evaporating condensate pan in machinery compartment.		
INSULATION		Foamed-in-place polyurethane insulation.		
TEMPERATURE RANGE		Adjustable from -10° to +10° F.		
REFRIGERATION		R134a capillary tube type hermetic condensing unit with service valves pulls out for service and cleaning.		
DEFROST SYSTEMS		Solid-state, push-button defrost system, manually initiated at the end of each day, automatically terminates after six hours. Evaporator automatically defrosts every 4 hours for approximately 20 minutes (time/temperature terminated.)		
OPTIONAL ACCESSORIES		<ul style="list-style-type: none"> • Backsplash • Set of 4 adjustable legs • Set of 4 casters w/ brakes • Laminated front face & color coordinated machinery grille • Laminated end - right or left • 2', 3', 4' Bottle Rail (field installed) 		

*Note: For one shelf, add the number 1 to the end of the model number (i.e., 8365A1).
For two shelves, add the number 2 to the end of the model number (i.e. 8350-2).



Plumbing

No plumbing connections are required. Condensate from the cooling coil is automatically evaporated through a condensate pan located in the condensing unit section.

Electrical

The cabinet must be connected to a separately fused power source (see Electrical Specification Plate) and grounded in accordance with National and Local Electrical Codes. Caution: Do not attempt to operate the equipment on any other power source than that listed on the Electrical Specification Plate.

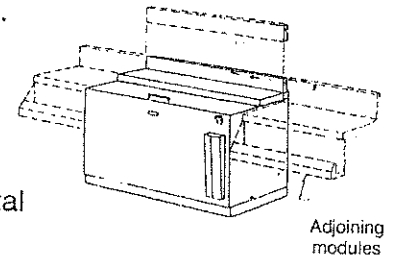
Installing Shelves (when provided)

The front and rear horizontal shelf brackets have been factory installed for a (2) shelf kit glass froster.

Note: When only (1) shelf kit is ordered, reposition the top horizontal shelf bracket, from the inside front liner wall, to the center row of pre-drilled holes. (Hole pattern directly below top bracket.) Secure shelf bracket in place using original thumb screws provided.

Installing Backsplash (optional)

- Position glass froster backsplash to top as shown. Use holes in backsplash as a guide to mark and drill $\frac{1}{8}$ " diameter holes into cabinet top. Fasten with $\frac{1}{2}$ " x #10 sheet metal screws.
- Place adjoining module(s) to side(s) of glass froster and fasten using $\frac{1}{2}$ " x #10 sheet metal screw and #10 speed nut.

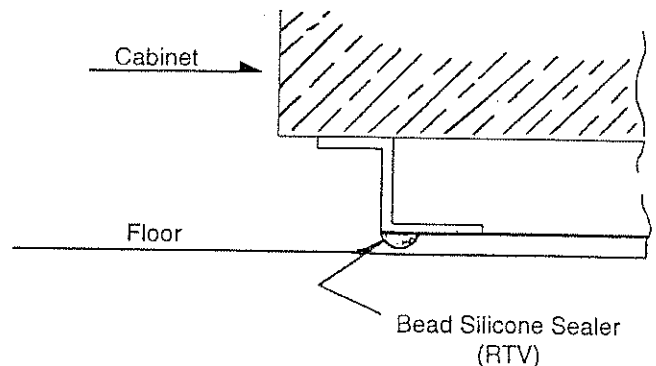


Placing the Cabinet

To assure maximum performance, fresh air must be allowed to circulate through the machinery compartment. It is important to allow at least two inches of clearance at the back or left end of the cabinet. Do not place anything on the top or in front of the cabinet that would obstruct air flow at these grilles.

Cabinet should either be leveled or pitched slightly toward the drain to allow any accumulated water to flow out.

For sanitation purposes, it may be necessary to seal the base of the cabinet to the floor. This can be accomplished by laying a bead of silicone sealant along the base of the cabinet as shown by the figure to the right.



Defrost System

This system consists of a six hour, as well as a four-hour defrost cycle. The six hour defrost cycle is manually activated and automatically terminated, while the four hour cycle is completely automatic.

The Six-Hour Solid-State Defrost Timer

This timer shuts off the power to the condensing unit, door frame heater, interior light, evaporator heater, and the automatic four hour defrost timer, while it supplies power to the evaporator fan and a low wattage cabinet heater, to eliminate frost buildup on the inside of the cabinet.

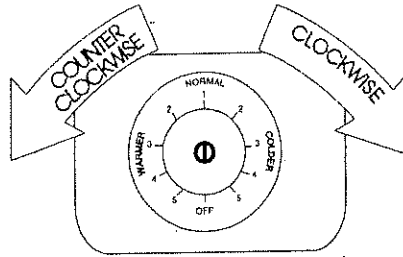
To activate the six-hour defrost system, depress the defrost switch located on the front grille of the cabinet. An amber light will illuminate and the defrost cycle will begin. When the defrost cycle ends, the light goes off and the cabinet resumes normal operation. To manually cancel the defrost cycle, momentarily turn off the electricity to the machine.

The Four-Hour Defrost Timer

This timer ensures that frost will not build up on the evaporator coil. Every four hours it shuts down the condensing unit and evaporator fan and supplies power to the larger-wattage defrost element clamped to the bottom of the evaporator. The defrost cycle lasts for approximately 20 minutes and will be shortened if the heat limit switch determines the coil is fully defrosted.

Temperature Control

An adjustable temperature control is located inside the froster on the right-hand side of the evaporator fan panel assembly. Approximate temperature limitations: minus 10° F. minimum and plus 10° F. maximum. Make adjustments as shown to attain the desired temperature.



Cleaning

Condenser

The condenser (located behind the front grille) should be inspected every 30 days, and cleaned, if necessary. Failure to keep the condenser clean will cause a loss in condensing unit efficiency.

Doors

Doors should be periodically removed from the cabinet and inspected for a buildup of foreign materials, such as syrups, beer, etc. Buildups on the underside of the doors, along with the cabinet breaker strips on which they ride, will cause them to bind, and therefore, not function as designed. If dirty, these surfaces should be cleaned with a silicone lubricating material. Aerosol silicone sprays can be obtained locally at most department or automotive stores.

To remove doors: With door closed, lift it upward by its handle and slide forward until door clears the cabinet top. Use the reverse procedure to reinstall the doors.

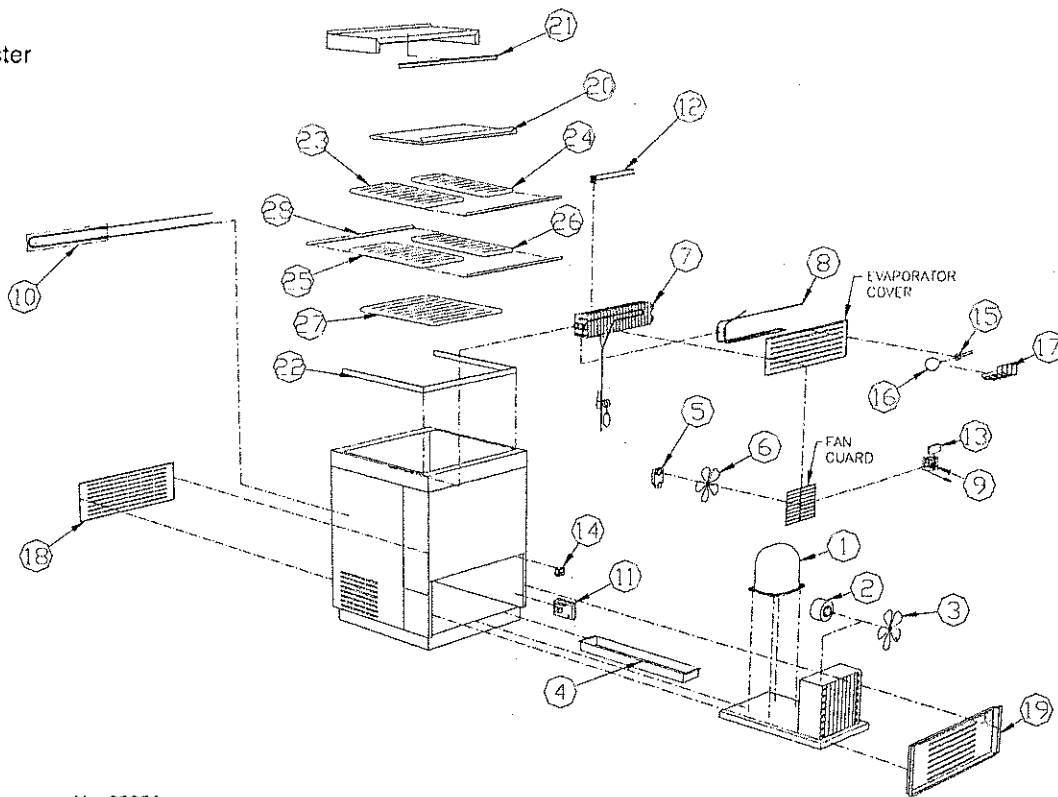
Cabinet

Use a damp cloth with a mild detergent and water to clean the inside and outside of the cabinet. Dry thoroughly. Do not allow cleaning agents or large amounts of water to go down the drain. Use an acceptable stainless steel polish to clean all stainless steel surfaces.

REPLACEMENT PARTS

GLASS FROSTERS

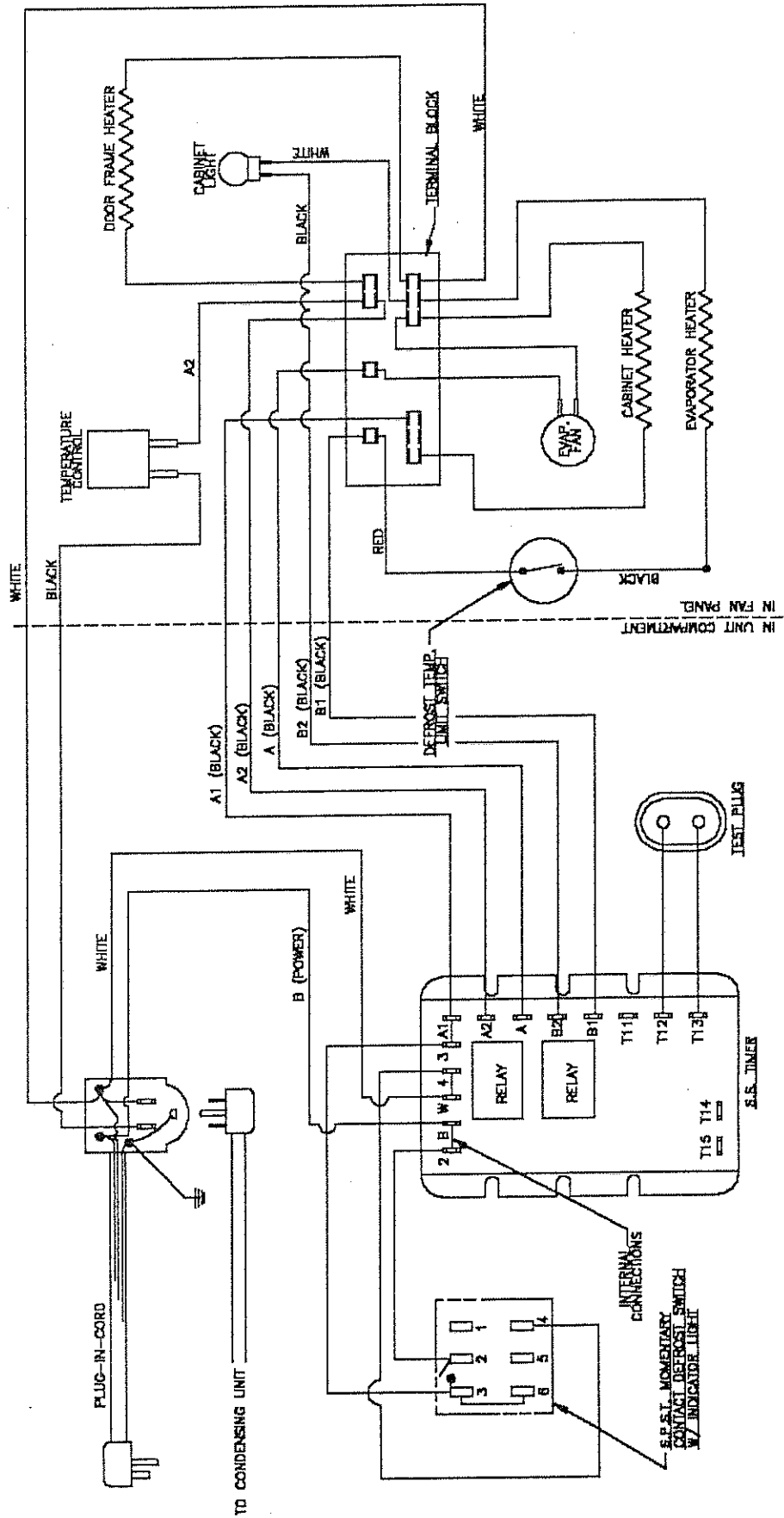
EXPLODED DRAWING OF
No. 8340 - 2 Foot Glass Froster



Item No.	No. 8340 Part No.	No. 8350 Part No.	No. 8365A Part No.	Description
1	57501	C22606-1	C22606-1	Replacement compressor for R134a unit
2	57513	57513	57513	Condensing Unit Fan Motor
3	C3150-3	C3150-3	C3150-3	Condensing Unit Fan Blade
4	C25665	62521	C29999	Condensate Pan
5	C15239A	C15239A	C15239A	Evaporator Fan Motor
6	C22370	C22370	C22370	Evaporator Fan Blade
7	C29992A	62530	C29993A	Evaporator Coil Assembly
8	C25655-1	61401-1	C25654-1	Evaporator Defrost Heater
9	C23095	C23095	C23095	Temperature Control
10	C30011-1	C30011-1	C30011-1	Cabinet heater
11	57466	57466	57466	Defrost timer
12	57676	57676	57676	Defrost Temp Limit Switch
13	C31059	C31059	C31059	Terminal Block
14	C31659	C31659	C31659	Rocker switch with pilot
15	C31022-1	C31046-1	C31046-1	Light Socket
16	C15046	C15046	C15046	7 1/2 Watt Light Bulb
17	C25683	C25683	C25683	Light Bulb Guard
18	C29960-1G	C29960-1G	C29960-1G	Back Grille
19	C30844-1	62511-1	C30845-1	Front Grille (Stainless Steel Models)
19	C30844-1P	62511-1P	C30845-1P	Front Grille (Black Painted Models)
20	62758-1	62758-3	62758-2	Door assembly (Part number represents one door)
21	C27941-3	C27941-5	C27941-1	Top Wiper Gasket
22	C31703A	63059	C31704A	Breaker strip kit
23	C29937-2	C29937-2	C29937-2	Upper Shelf (All Models: 15 3/16" x 11 1/2")
24	C30025-2	C30025-2	C29991-2	Upper Shelf (Nos. 8340 & 8350: 15 3/16" x 8" No. 8365A: 15 3/16" x 10")
25	C29938-2	C29938-2	C29938-2	Lower Shelf (All Models: 19 1/4" x 11 1/2")
26	C30026-2	C30026-2	C29990-2	Lower Shelf (Nos. 8340 & 8350: 19 1/4" x 8" No. 8365A: 19 1/4" x 10")
27	C29994-2	62545-2	C29989-2	Bottom Rack
28	C25672-1	61391-1	C25673-1	Shelf "L" Bracket
Not Shown				
	N/A	N/A	C25539	Center mullion assembly between doors
	C31067A	63048	C31075A	One complete set of upper & lower shelves
	C31066A	63047	C31074A	One set of lower shelves

WIRING DIAGRAM

GLASS FROSTERS



Avoiding Stainless Steel Corrosion

Corrosion can be prevented by following product cautions, cleaning instructions and avoiding use of certain chemicals or objects which will cause stainless steel corrosion.

Stainless Steel Enemy	Result
Steel wool or steel scouring pads	Small particles break off, lodging in the surface and rusting begins.
Cherry/Onion/Olive juice	Sets up a galvanic action that can transfer enough metal to cause pin hole leaks.
Chlorine Bleach	Bar rags soaked in bleach and thrown into a stainless steel sink will cause the stainless to develop pin hole leaks after a very short period of time.
Sharp objects	Dropped into a stainless steel sink will cause a puncture dimple and over time will appear as a pin hole leak.

Recommended Cleaning Agents

Job	Cleaning Agent*	Comments
Routine Cleaning	Soap, ammonia, detergent	Apply with sponge or cloth. Can be used on all finishes.
Fingerprints and smears	Areal 20, Lac-O-Nu, Lumin Wash, O'Cedar Cream Polish	Provides barrier film to minimize fingerprints. Can be used on all finishes.
Stubborn stains and Discolorations	Allchem Concentrated Cleaner, Samae, Twinkle, Zud Restoro, Grade F or FFF Italian Pumice, Whiting or Talc, Liquid Nu Steel, Copper's or Revere Stainless Steel Cleaner, Lumin Cleaner, Sta-Clean, Cameo Copper Cleaner, Allen Polish Highlite, Penny-Brite, Copper Brite	Rub lightly, using dry or damp cloth in the direction of polish lines on the stainless steel.

**Use of propriety names is intended only to indicate a type of cleaner and does not constitute an endorsement. Omission of any proprietary cleaner does not imply its inadequacy. All products should be used in strict accordance with instructions on the package.*