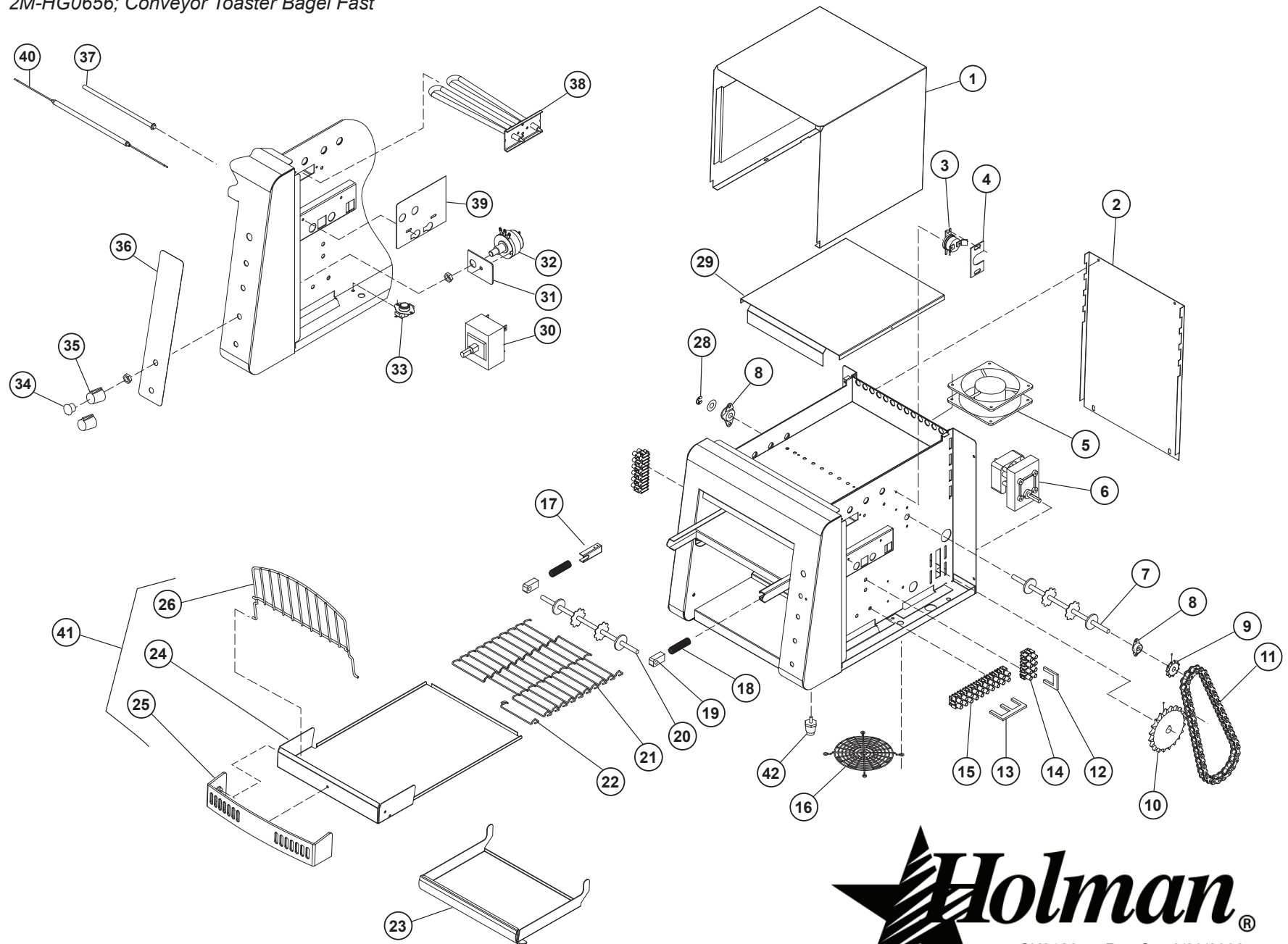


2M-HG0656; Conveyor Toaster Bagel Fast



**MODEL: QCS/RCS-2-1200B, 1600B CONVEYOR TOASTER**

THIS DRAWING CONTAINS INFORMATION CONFIDENTIAL TO STAR MFG. INT'L. INC.  
NO REPRODUCTION OR DISCLOSURE OF ITS CONTENTS IS PERMITTED.



SK2128 Rev C 6/23/2006

# PARTS LIST

April 22, 2015, Rev. J

## RCS-2-1200B Conveyor Toasters

Key Number	Part Number	Number Per Unit	Description
1	HC-101370	1	ENCLOSURE
2	HF-402449	1	PANEL, BACK
3	2E-200574	1	SWITCH, FAN CERAMIC
4	HG-402144	1	BRACKET, FAN SWITCH
5	2U-200561	1	MOTOR, FAN
6	HB-120262	1	MOTOR, DRIVE, FAN INCLUDED
	2R-Z8879	1	FAN BLADE, DRIVE MOTOR
7	2A-202900	1	SHAFT, DRIVE
8	HA-112261	2	BUSHING, REAR
9	2P-Z8779	1	SPROCKET, DRIVEN (25B11 X 5/16")
10	2P-200648	1	SPROCKET, DRIVE (25B32 X 5/16")
11	2P-150015	1	CHAIN, DRIVE
12	2P-115501	6	JUMPER, TERMINAL BLOCK, SMALL, 2 POS.
13	2P-115502	1	JUMPER, TERMINAL BLOCK, SMALL, 3 POS.
14	HK-115388	1	TERMINAL BLOCK, 6 POSITION
	HQ-135553	1	WIRE HARNESS w/6 POS. TERMINAL BLOCK
	HC-115381	1	TERMINAL BLOCK, 4 POSITION
	2E-135676	1	WIRE HARNESS w 4 POS. TERMINAL BLOCK
15	HC-115390	1	TERMINAL BLOCK, 10 POSITION
	HQ-135603	1	WIRE HARNESS w/ 10 POS. TERMINAL BLOCK
16	2R-200562	1	GUARD, FAN MOTOR
17	2A-Z9394	2	SPRING BRACKET
18	2P-200736	2	2" BEARING SPRING
19	2P-200700	2	BEARING, FRONT PTFE
20	2A-202904	1	SHAFT, IDLER
21	SP-160027	1	BELT, CONVEYOR (10" x 35 1/2")
	2B-200601	1	LINK, CONVEYOR BELT
23	HA-100560	1	TRAY, PULL-OUT
24	HC-402457	1	CRUMB TRAY
25	2R-200787	1	CRUMB TRAY GUARD
	Crumb Tray Mounting Hardware		
	2C-200067	3	SCREW, 6-32 X 1/4 PHIL TRUSS SS
	2C-200101	3	WASHER, #6 LOCK MED SS
26	2B-200763	1	LOAD-UP WIRE RACK
27	HQ-135553	1	WIRING HARNESS, BF700
28	2A-200284	1	E-CLIP
29	HD-100571	1	BAFFLE, AIR FLOW
30	2E-200551	1	SWITCH, ROTARY POWER SAVER
31	2P-402728	1	ANTI-SPIN PLATE
32	SP-118002	1	SWITCH, SPEED CONTROL, 250 OHM
33	2E-200566	1	SWITCH, HIGH LIMIT RESET
34	2R-200708	2	CAP, KNOB
35	2R-200768	1	KNOB, SPEED CONTROL
	2R-200769	1	KNOB, POWERSAVER
36	2M-201810	1	LABEL, CONTROL PANEL
37	SEE TABLE		ELEMENT, METAL
38	SEE TABLE		ELEMENT, SERPENTINE
39	HG-402789	1	RETAINER, ELEMENT
41	HF-101115	1	CRUMB TRAY ASSEMBLY
	2C-200067	3	SCREW 6-32 X 1/4 THP SS
	2C-200101	3	WASHER #6 SPLIT SS
42	2R-200709	4	LEG, 1" CHROME PLASTIC
NI	2E-200387	1	CORD, FAN TO TERMINAL PLUG
NI	2R-Z8879	1	FAN BLADE, DRIVE MOTOR
NI	2B-200600	1	LINK, CONVEYOR BELT
NI	HF-140070	1	CORD SET, POWER, 20 AMP
NI	2E-200384	1	CORD SET, POWER, 30 AMP
NI	2K-200465	1	BUSHING, CORD HEYCO
NI	1L-Z12397	1	EXTREME PRESSURE MULTIPURPOSE SYNTHETIC GREASE (80°F TO 400°F) , TUBE 4 oz.
NI	2P-200786	1	WIRE BRUSH

Manufactured Before 7/20/2004  
Manufactured Before 7/20/2004

QCS-2

R2-12BA

R2-12BASH

R2-12BA-V02,V04

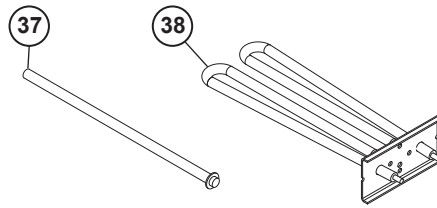
2M-HG0656; Conveyor Toaster Bagel / Fast

Some items are included for illustrative purposes only and in certain instances may not be available.



**RCS Conveyor Toasters  
HEATER TUBES**

Key Number	Description	Part Number	Number Per Unit
38	HEATER TUBE METAL, TOP 208V	<a href="#">2N-209114</a>	2
37	HEATER TUBE METAL, BOTTOM 208V	<a href="#">2N-209198</a>	2
38	HEATER TUBE METAL, TOP 220V	2N-209113	2
37	HEATER TUBE METAL, BOTTOM 220V	2N-209192	2
38	HEATER TUBE METAL, TOP 240V	<a href="#">2N-209112</a>	2
37	HEATER TUBE METAL, BOTTOM 240V	<a href="#">2N-209194</a>	2



RCS HEATER TUBES